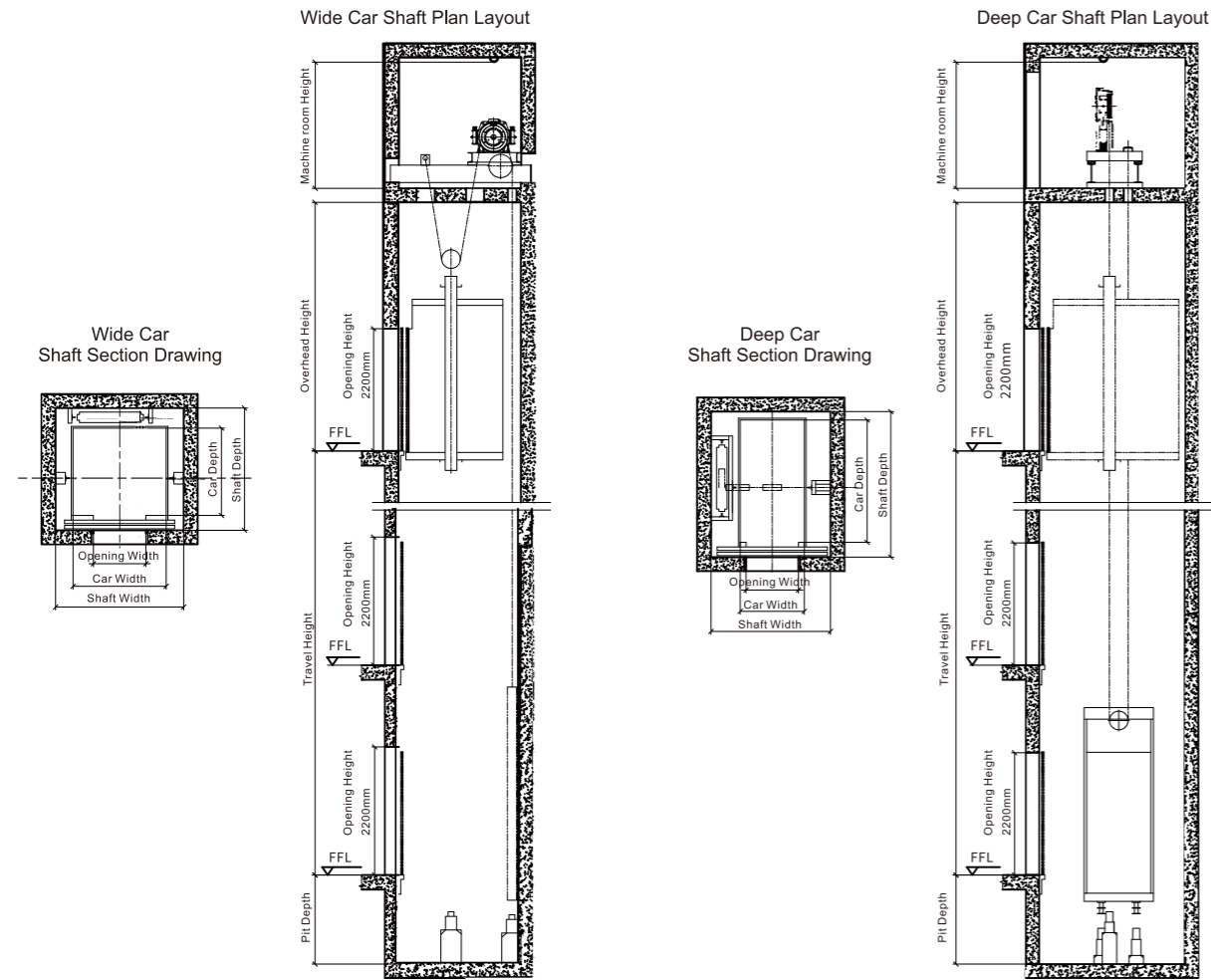






# METIS-CR1

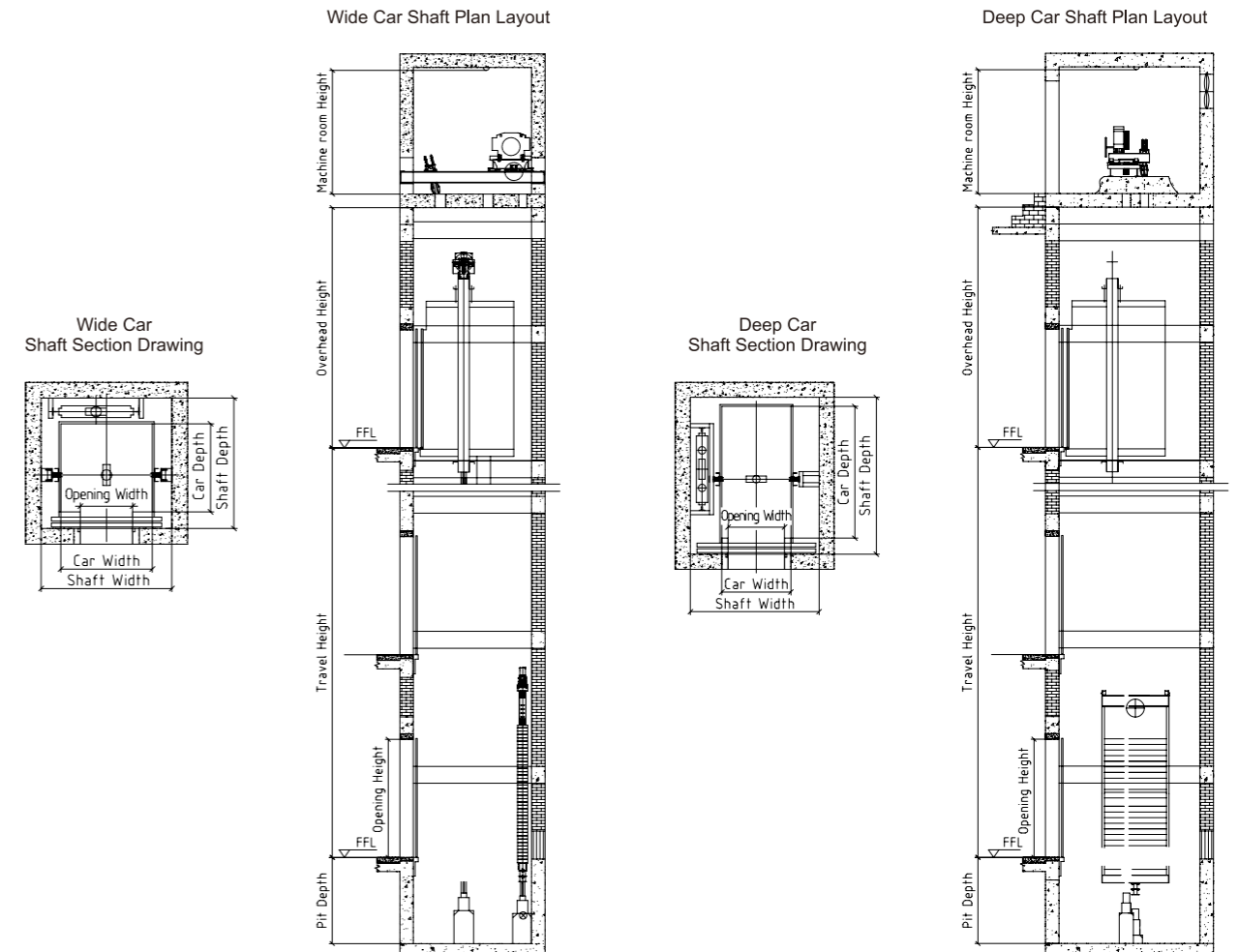
Compact Machine Room Passenger Elevator



Capacity (kg)	Speed (m/s)	Car Dimension(mm)		Door Opening Size (mm)		Hoistway Size(mm)		Overhead Height	Pit Depth
		Wide Cabin (single door)	Deep Cabin (single door)	Center Opening	Side door	Wide Cabin (width×depth)	Deep Cabin (width×depth)		
630	1	1400*1100*2500	/	800*2100	/	2000*1750	/	4200	1500
	1.75							4450	1600
800	1	1400*1350*2500	1200*1600*2500	800*2100	/	2000*2000	2000*2000	4200	1500
	1.5							4400	1570
	1.75							4450	1600
	2							4550	1700
1050	1	1600*1500*2500/ 2000*1250*2500 (Suitable for stretcher elevators)	1300*1750*2500/ 1100*2100*2500	900*2100	1300*2100 (Suitable for stretcher elevators)	2200*2100/ 2500*2000 ((Suitable for stretcher elevators))	2200*2100/ 2050*2500	4200	1500
	1.5							4400	1570
	1.75							4450	1600
	2							4550	1750
	2.5							4850	1900
1350	1	1950*1500*2500	1700*1750*2500/ 1200*2400*2500	1100*2100/ 900*2100 (Suitable for 1200*2400*2500 car)	/	2600*2200	2600*2200/ 2150*2750	4350	1550
	1.75							4550	1700
	2							4650	1750
	2.5							4900	1900
1600	1	1950*1750*2500	1700*2000*2500/ 1400*2400*2500	1100*2100/ 900*2100 (Suitable for 1400*2400*2500 car)	/	2600*2500	2600*2500/ 2400*2800	4350	1550
	1.75							4550	1700
	2							4650	1750
	2.5							4900	1900

# METIS-EC

Compact Machine Room Passenger Elevator

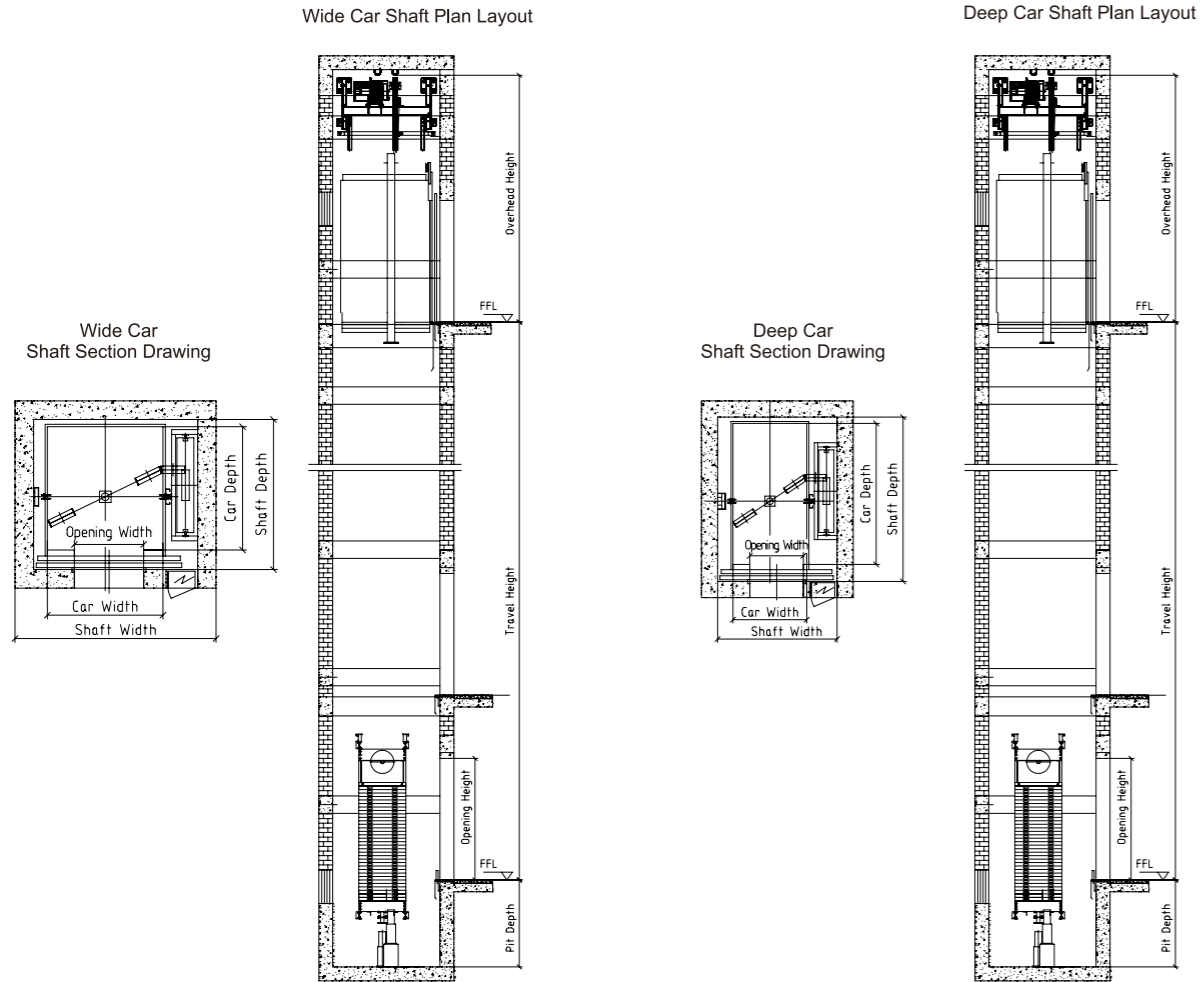


Capacity (kg)	Speed (m/s)	Car Dimension(mm)		Door Opening Size (mm)		Hoistway Size(mm)		Overhead Height	Pit Depth
		Wide Cabin (single door)	Deep Cabin (single door)	Center Opening	Side door	Wide Cabin (width×depth)	Deep Cabin (width×depth)		
630	1	1400*1100*2400	/	800*2100	/	2000*1750	/	4260	1450
	1.75							4680	1550
800	1	1400*1350*2400	1200*1600*2400	800*2100	800*2100	2000*2000	2000*2000	4400	1450
	1.5							4200	1550
	1.75							4250	1600
	2							4200	1550
1050	1	1600*1500*2400	1100*2100*2400	900*2100	900*2100	2200*2100	2050*2500	4000	1450
	1.5							4200	1550
	1.75							4250	1600

Note: 1.Deep car is used for specified application, such as for stretcher delivery in evacuation occasions.  
2.Car height is 2420mm when select standard C22 series ceiling (height80mm). Car height may vary due to different type of ceilings.

# JOYMORE-EC

## Machine Roomless Passenger Elevator

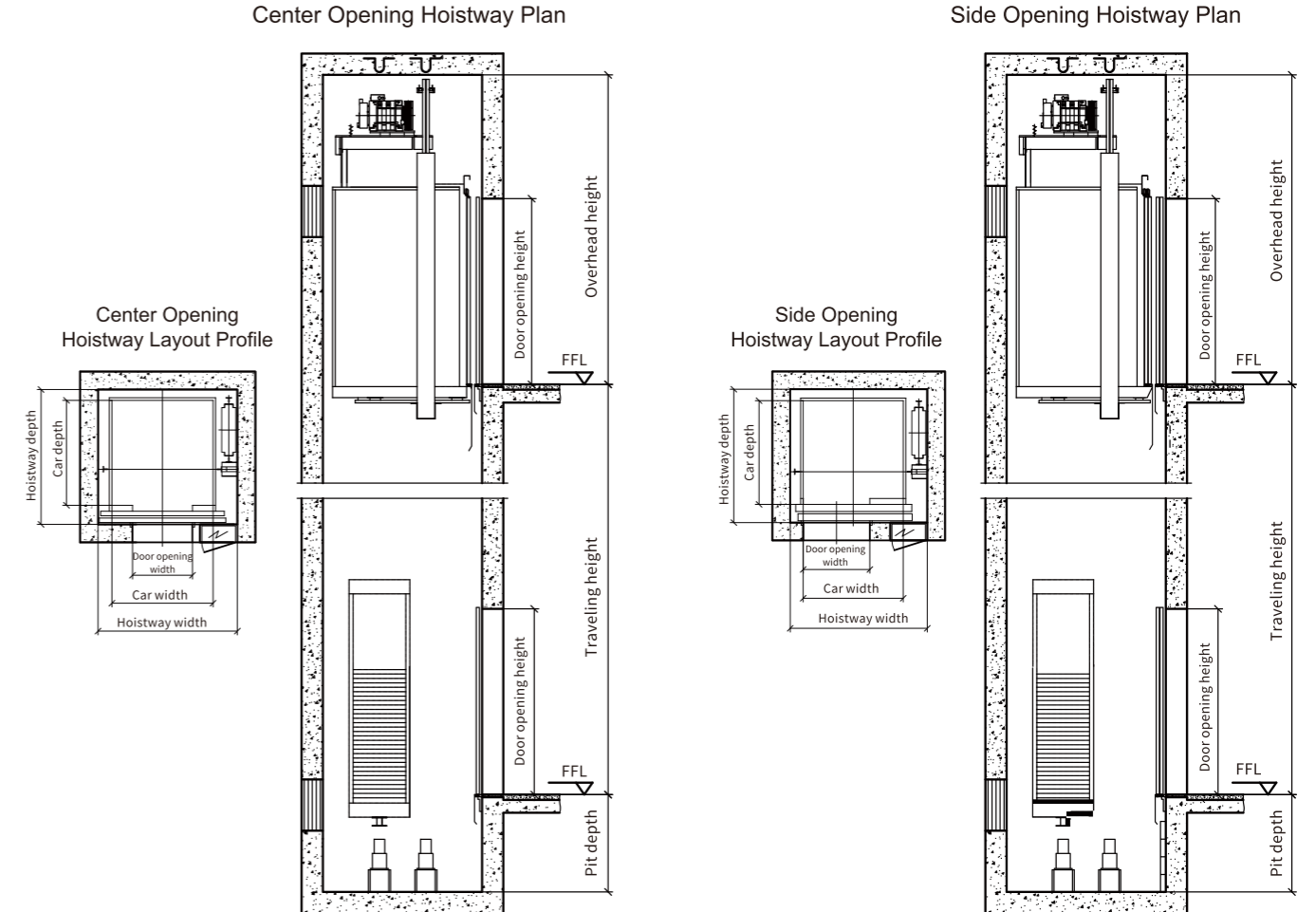


Capacity (kg)	Speed (m/s)	Car Dimension(mm)		Door Opening Size (mm)		Hoistway Size(mm)		Overhead Height	Pit Depth
		Wide Cabin (single door)	Deep Cabin (single door)	Center Opening	Side door	Wide Cabin (width×depth)	Deep Cabin (width×depth)		
630	1	1100*1400*2400	1400*1100*2400	800*2100	800*2100	1750*1750	2200*1550	4250	1300
	1.5							4400	1400
	1.75							4450	1450
800	1	1350*1400*2400	1100*1750*2400	800*2100	800*2100	1970*1750	1770*2100	4250	1300
	1.5							4400	1400
	1.75							4450	1450
1050	1	1500*1600*2400	1100*2100*2400	900*2100	800*2100	2130*1950	1780*2450	4250	1300
	1.5							4400	1400
	1.75							4450	1450

- Note:
- 1.Car depth=2100mm is used for specified application, such as for stretcher delivery in evacuation occasions.
  - 2.Car Net Height: 2400mm, It refers to the vertical distance from the car floor to the ceiling (for integrated ceiling, overall height equals net height). If other types of ceilings are selected, the overhead may need to be increased accordingly. Please consult our Sales & Technical Support Department.
  3. When opening the dual door, seal plate should be added at the pit.
  - 4.All EC series carriages are designed without kickplate.

# JOYMORE-7

## Machine Roomless Passenger Elevator



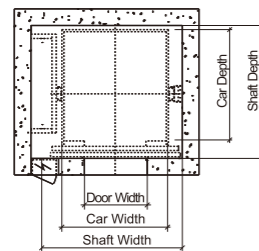
Capacity (kg)	Speed (m/s)	Car Dimension (mm)	Door Opening Size (mm)		Hoistway Size(mm)	Overhead Height	Pit Depth
			Side Opening	Center Opening			
450	1	1000*1200*2200	800*2100	/	1570*1600	3500	1170
	1.6					3700	1300
	1.75						
630	1	1100*1400*2200	800*2100	1770*1800	1670*1800	3500	1170
	1.6					3700	1300
	1.75						
800	1	1350*1400*2200	900*2100	800*2100	1920*1800	3500	1170
	1.6					3700	1300
	1.75						
1050	1	1400*1600*2200	900*2100	2000*2000	1800*2500	3500	1170
	1.6					3700	1300
	1.75						

- Note:
- 1.Deep car is used for specific application, such as for stretcher delivery in evacuation occasions.
  - 2.Car height is 2200mm, referring to the height from floor to ceiling.Ceiling height can be increased as an optional feature for taller top configurations.
  - 3.If dual opening is used, a seal plate is required in the pit.

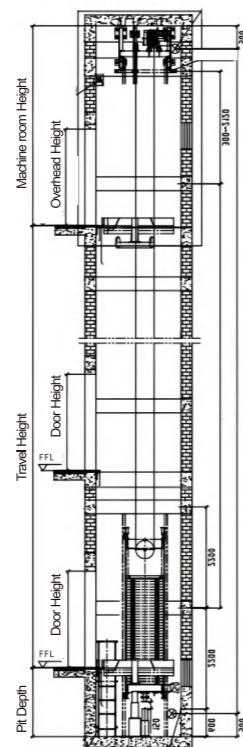
# JOYMORE-7A

## Machine Roomless Passenger Elevator

Shaft Section Drawing



Shaft Plan Layout



Car1 Capacity (kg)	Speed (m/s)	Car Dimension(mm)	Door Opening Size (mm)	Hoistway Size(mm)	Overhead Height	Pit Depth
		Inner Size(single door)	Center Opening	Width × Depth		
450	1	1000*1200*2420	700*2100	1620*1600	4450	1300
550	1	1100*1300*2420	700*2100	1720*1650	4450	1300
630	1	1100*1400*2420	800*2100	1750*1750	4250	1300
	1.75				4450	1450
800	1	1350*1400*2420	800*2100	1970*1750	4250	1300
	1.75				4450	1450
1050	1	1500*1600*2420	900*2100	2130*1950	4250	1300
	1.75				4450	1450
1150	1	1500*1700*2420	900*2100	2130*2050	4250	1300
	1.75				4450	1450

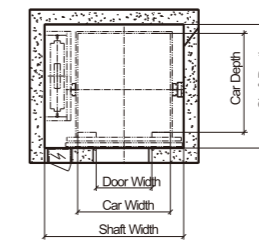
Car2 Capacity (kg)	Speed (m/s)	Car Dimension(mm)	Door Opening Size (mm)	Hoistway Size(mm)	Overhead Height	Pit Depth
		Inner Size(single door)	Center Opening	Width × Depth		
450	1	1400*900*2420	800*2100	2020*1300	4450	1300
550	1	1400*1000*2420	800*2100	2020*1400	4450	1300
630	1	1400*1100*2420	800*2100	2020*1550	4250	1300
	1.75				4450	1450
800	1	1100*1750*2420	800*2100	1770*2100	4250	1300
	1.75				4450	1450
1050	1	1100*2100*2420	800*2100	1780*2450(v≤1.75m/s)	4250	1300
	1.75				4450	1450
1150	1	1200*2100*2420	800*2100	1880*2450	4250	1300
	1.75				4450	1450

Note: 1. For 380V, 50Hz, 3-phase, 5-wire systems, the zero and ground wires should be separated, and grounding resistance should be <4Ω.  
 2. Car depth>2100mm is used for specific application, such as stretcher delivery in evacuation occasions.  
 3. Car height is 2420mm, referring to the height from floor to ceiling. Car height may vary depending on the type of ceiling.If dual opening is used, a seal plate is required in the pit.

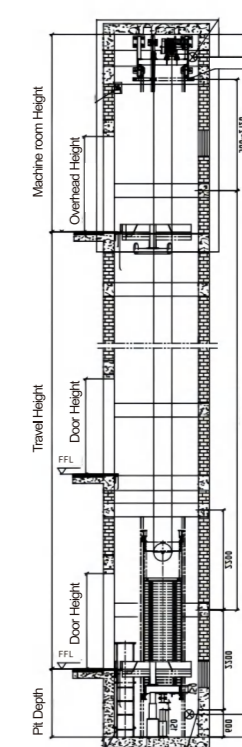
# JOYMORE-7B

## Machine Roomless Passenger Elevator

Shaft Section Drawing



Shaft Plan Layout



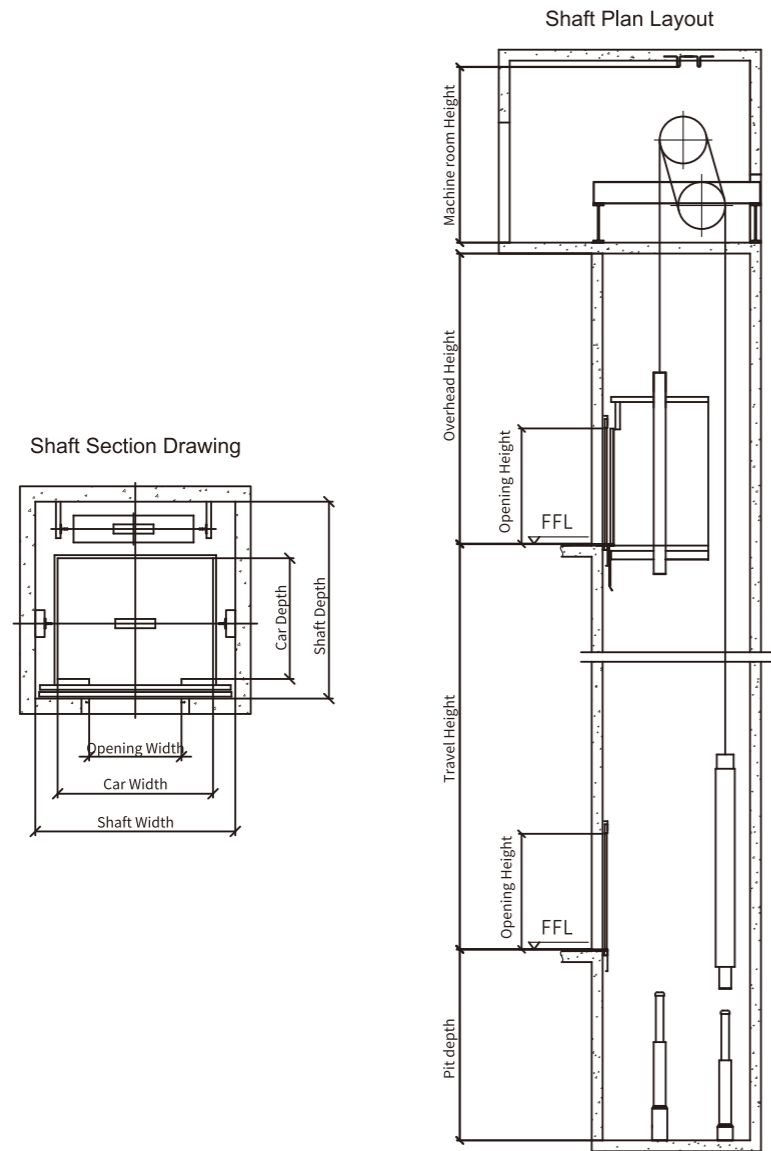
Car1 Capacity (kg)	Speed (m/s)	Car Dimension(mm)	Door Opening Size (mm)	Hoistway Size(mm)	Overhead Height	Pit Depth
		Inner Size(single door)	Center Opening	Width × Depth		
450	1	1100*1100*2420	700*2100	1900*1500	3900	1300
550	1	1100*1300*2420	700*2100	1900*1650	3900	1300
630	1	1100*1400*2420	800*2100	1900*1750	3900	1300
	1.75				4100	1500
800	1	1350*1400*2420	800*2100	2150*1750	3900	1300
	1.75				4100	1500
1050	1	1500*1600*2420	900*2100	2300*2050	3900	1300
	1.75				4100	1500
1150	1	1500*1700*2420	900*2100	2300*2100	3900	1300
	1.75				4100	1500
1350	1	1700*1750*2420	1100*2100	2700*2150	4400	1450
	1.75				4600	1600
1600	1	1750*1950*2420	1100*2100	2750*2350	4400	1450
	1.75				4600	1600

Car2 Capacity (kg)	Speed (m/s)	Car Dimension(mm)	Door Opening Size (mm)	Hoistway Size(mm)	Overhead Height	Pit Depth
		Inner Size(single door)	Center Opening	Width × Depth		
450	1	/	/	/	3900	1300
550	1	1300*1100*2420	800*2100	2100*1500	3900	1300
630	1	1400*1100*2420	800*2100	2200*1500	3900	1300
	1.75				4100	1500
800	1	1100*1750*2420	800*2100	1900*2100	3900	1300
	1.75				4100	1500
1050	1	1100*2100*2420	800*2100	1900*2450	3900	1300
	1.75				4100	1500
1150	1	1200*2100*2420	800*2100	2000*2450	3900	1300
	1.75				4100	1500
1350	1	1200*2400*2420	900*2100	2300*2800	4400	1450
	1.75				4600	1600
1600	1	1400*2400*2420	900*2100	2400*2800	4400	1450
	1.75				4600	1600

Note: 1. For 380V, 50Hz, 3-phase, 5-wire systems, the zero and ground wires should be separated, and grounding resistance should be <4Ω.  
 2. Car depth>2100mm is used for specific application, such as stretcher delivery in evacuation occasions.  
 3. Car height is 2420mm, referring to the height from floor to ceiling. Car height may vary depending on the type of ceiling.If dual opening is used, a seal plate is required in the pit.

# METIS-HS

High Speed Elevator

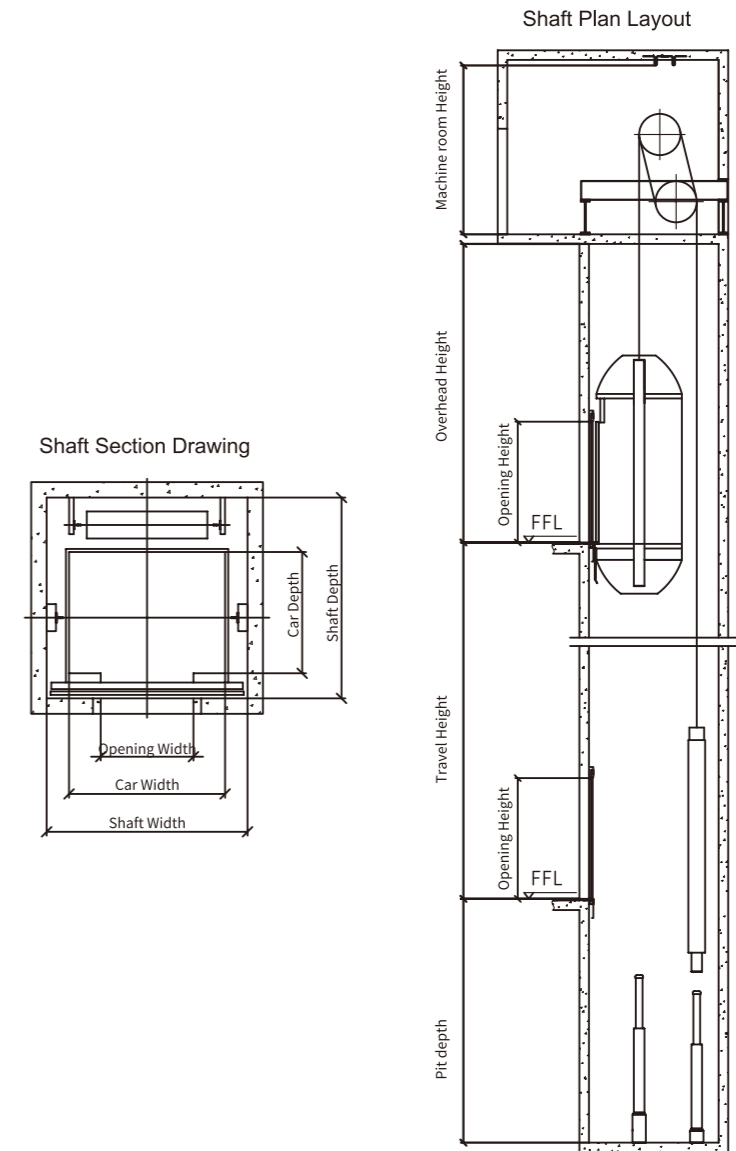


Specification	Capacity(kg)	Speed (m/s)	Car Dimension (mm)	Door Opening Size (mm)	Hoistway Size(mm)	Overhead Height	Pit Depth
800(10P)	800	3.0	1400*1350*2500	CO 800*2100	2000*2300	5300	3200
		3.5				5300	3200
		4.0				5700	3400
1050(13P)	1050	3.0	1600*1500*2500	CO 900*2100	2200*2400	5300	3200
		3.5				5300	3200
		4.0				5700	3400
1150(15P)	1150	3.0	1700*1500*2500	CO 1000*2100	2300*2400	5300	3200
		3.5				5300	3200
		4.0				5700	3400
1275(17P)	1275	3.0	1850*1500*2500	CO 1100*2100	2500*2400	5300	3200
		3.5				5300	3200
		4.0				5700	3400
1350(18P)	1350	3.0	1950*1500*2500	CO 1100*2100	2600*2400	5300	3200
		3.5				5300	3200
		4.0				5700	3400
1600(21P)	1600	3.0	1950*1750*2500	CO 1100*2100	2600*2600	5700	3200
		3.5				6000	3400
		4.0				6300	3900

Note: The standard configuration adopts Terminal Stroke Reduction. When not used, the overhead and pit depth should be increased.

# METIS-HS

High Speed Elevator

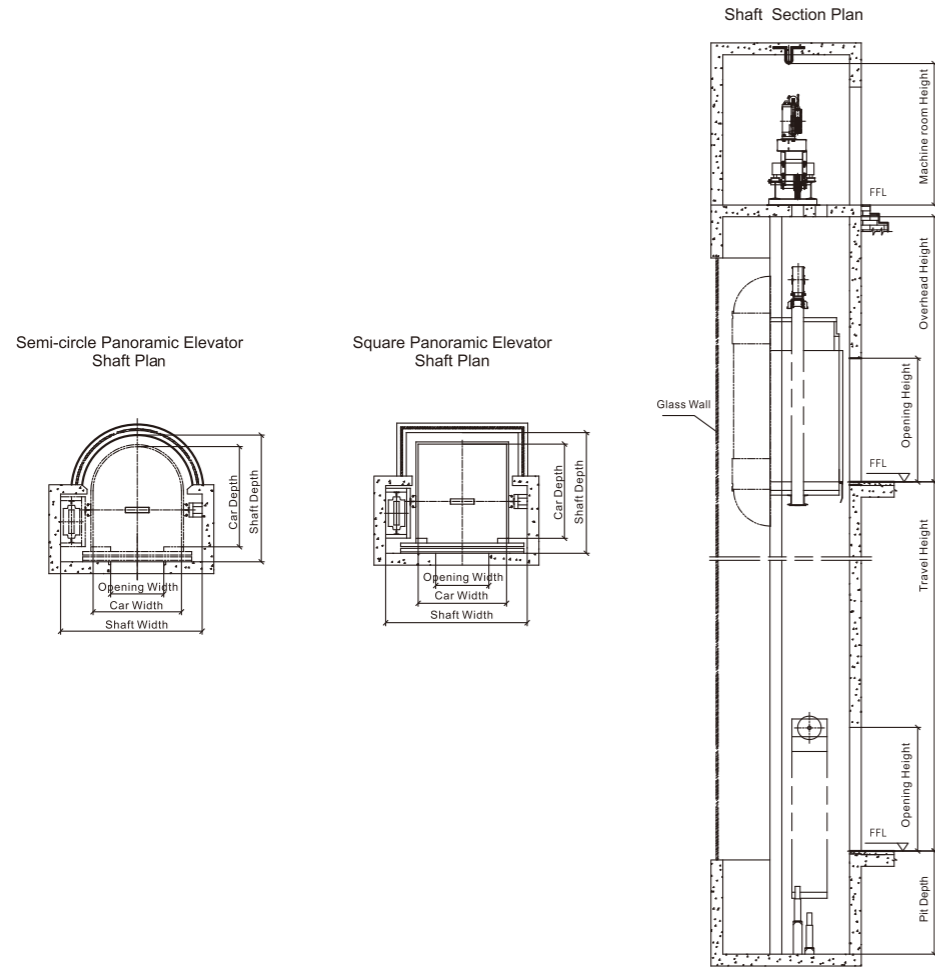


Specification	Capacity(kg)	Speed (m/s)	Car Dimension(mm)	Door Opening Size (mm)	Hoistway Size(mm)	Overhead Height	Pit Depth
1350(18P)	1350	5.0	1950*1500*2800	CO 1100*2400	2600*2450	6900	4400
		6.0				6900	4800
		7.0				7300	5400
		8.0				8300	6200
1600(21P)	1600	5.0	1950*1750*2800	CO 1100*2400	2600*2450	6900	4400
		6.0				6900	4800
		7.0				7300	5400
		8.0				8300	6200

Note: The standard configuration adopts Terminal Stroke Reduction. When not used, the overhead and pit depth should be increased.

# BUILDINGEYE-ME

## Compact Machine Room Panoramic Elevator

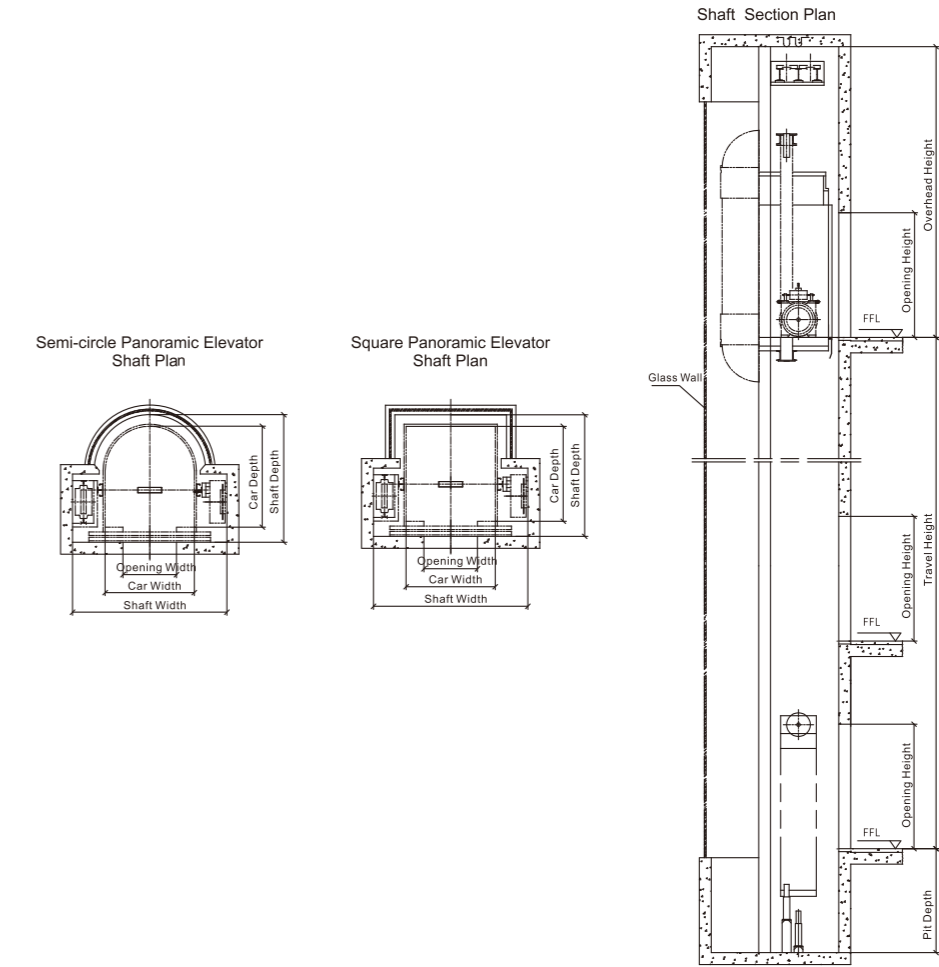


Specification	Capacity (kg)	Car Shape	Speed (m/s)	Car Dimension (mm) (single door)	Door Opening Size (mm)	Hoistway Size (mm)	Overhead Height				Pit Depth			
							1.0 m/s	1.75 m/s	2.0 m/s	2.5 m/s	1.0 m/s	1.75 m/s	2.0 m/s	2.5 m/s
630(8/P)	630	semicircle	1.0 1.75	1100*1550*2350	CO 800*2100	2000*2050	4300	4500	—	—	1750	1900	—	—
		square	1.0 1.75	1100*1400*2350			2050*1850	4300	4500	—	—	1600	1750	—
800(10/P)	800	semicircle	1.0 1.75 2.0	1300*1600*2350	CO 800*2100	2100*2050	4300	4500	4600	—	1850	2000	2050	—
		square	1.0 1.75 2.0	1300*1450*2350			2100*1950	4300	4500	4600	—	1600	1750	1800
1050(14/P)	1050	semicircle	1.0 1.75 2.0 2.5	1500*1700*2350	CO 900*2100	2400*2150	4300	4500	4600	4850	1950	2100	2150	2300
		square	1.0 1.75 2.0 2.5	1500*1600*2350			2400*2050	4300	4500	4600	4850	1600	1750	1800
1350(18/P)	1350	semicircle	1.0 1.75 2.0 2.5	1700*1900*2350	CO 1100*2100	2600*2350	4400	4600	4700	4950	2050	2200	2250	2400
1600(21/P)	1600	semicircle	1.0 1.75 2.0 2.5	1700*2200*2350	CO 1100*2100	2600*2650	4400	4600	4700	4950	2050	2200	2250	2400

Note: The following overhead height is only applicable for the elevators that are not inside steel structure shaft and those elevators with car top is no more than 700mm away from the shaft wall.

# BUILDINGEYE-JO

## Machine Roomless Panoramic Elevator

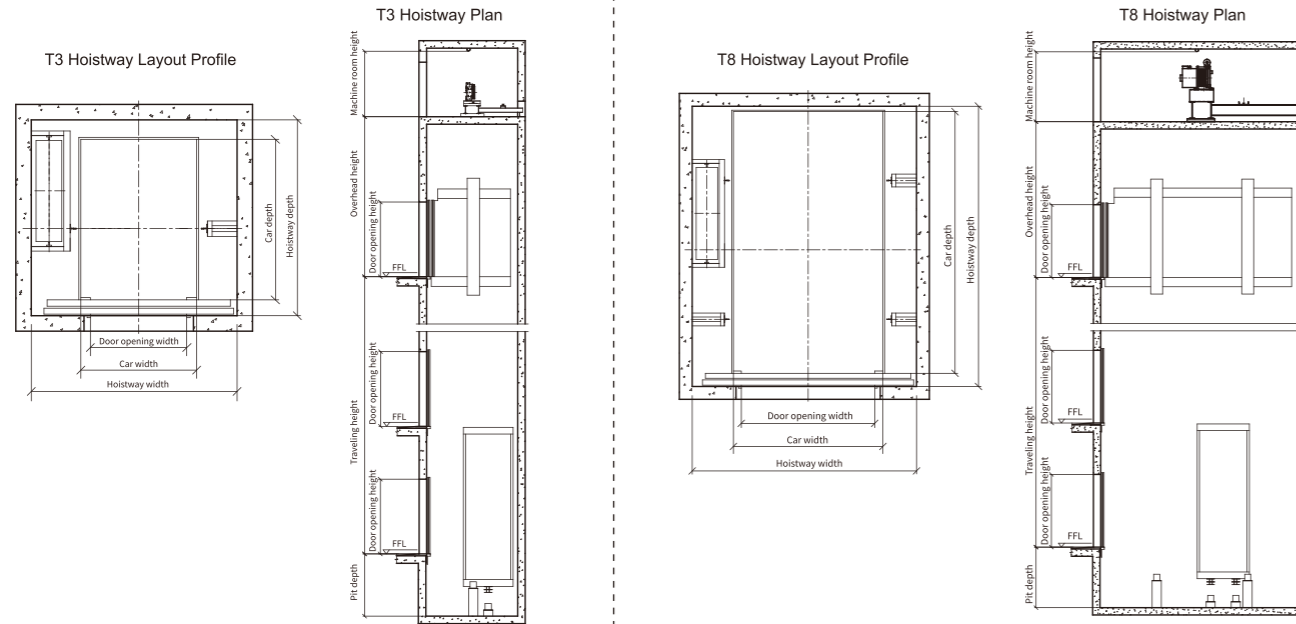


Specification	Capacity (kg)	Car Shape	Speed (m/s)	Car Dimension (mm) (single door)	Door Opening Size (mm)	Travel Height		Hoistway Size (mm)	Overhead Height		Pit Depth	
						1.0m/s	1.75m/s		1.0m/s	1.75m/s	1.0m/s	1.75m/s
630(8/P)	630	square	1.0 1.75	1100*1400*2350	CO 800*2100	≤45	≤75	2200*1850	4700	4900	1500	1650
		semicircle	1.0 1.75	1100*1550*2350					2200*2050	4700	4900	1700
800(10/P)	800	square	1.0 1.75	1300*1450*2350	CO 800*2100	≤45	≤75	2400*1950	4700	4900	1500	1650
		semicircle	1.0 1.75	1300*1600*2350					2400*2050	4700	4900	1800
1050(14/P)	1050	square	1.0 1.75	1500*1600*2350	CO 900*2100	≤45	≤75	2600*2050	4700	4900	1500	1650
		semicircle	1.0 1.75	1500*1700*2350					2600*2150	4700	4900	1900
1350(18/P)	1350	semicircle	1.0 1.75	1700*1900*2350	CO 1100*2100	≤45	≤75	3050*2350	4700	4900	2000	2150
1600(21/P)	1600	semicircle	1.0 1.75	1700*2200*2350	CO 1100*2100	≤45	≤75	3050*2650	4700	4900	2000	2150

Note: The following overhead height is only applicable for the elevators that are not inside steel structure shaft and those elevators with car top is no more than 700mm away from the shaft wall.

# ATLAS-T3/T8

Small Machine Room Cargo Elevator



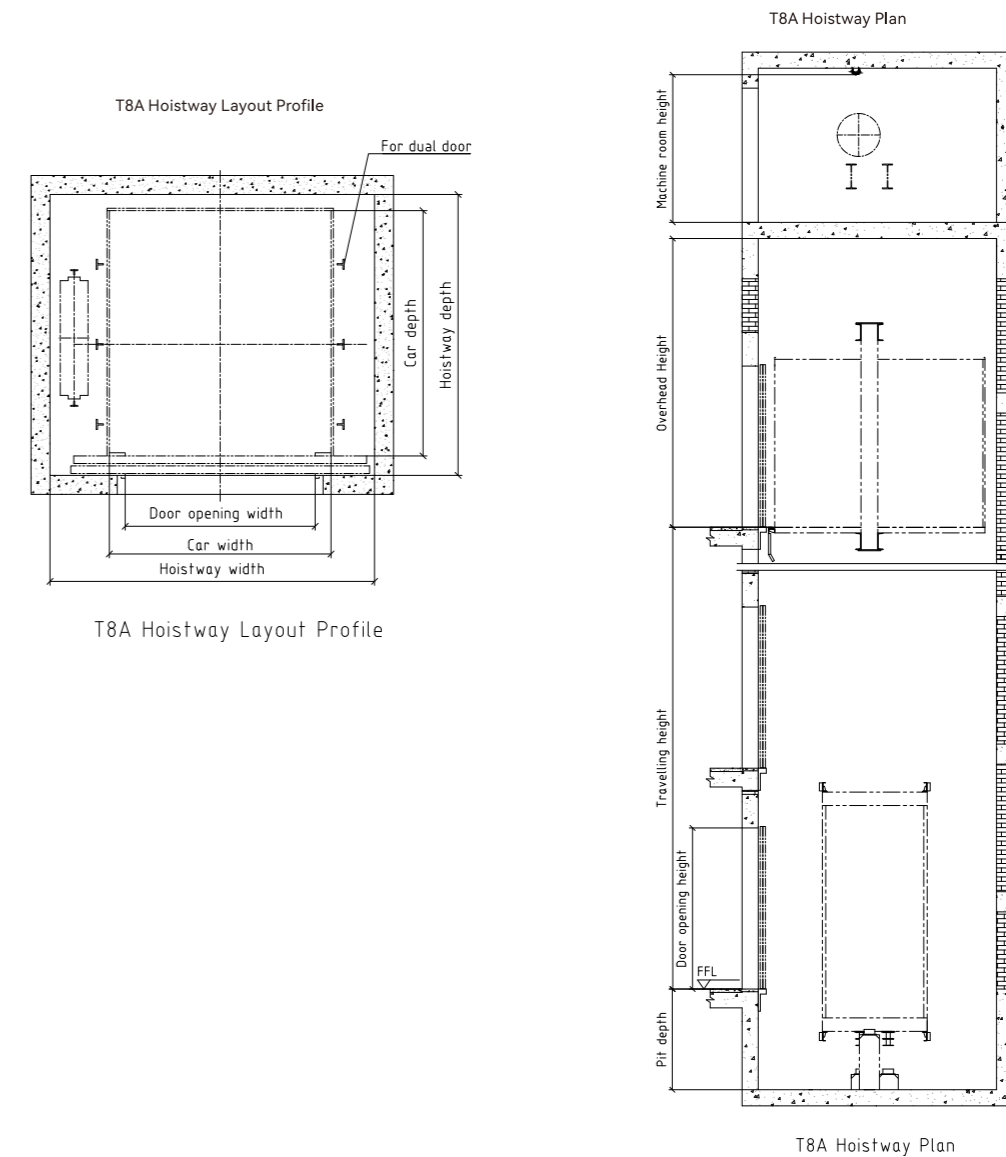
ATLAS-T3	Speed (m/s)	Car Dimension(mm)		Door Opening Size (mm)	Hoistway Size(mm)		Overhead Height	Pit Depth
		Inner Size (single door)	Inner Size (dual door)		Width x Depth (single door)	Width x Depth (dual door)		
2000	0.5	1800*2300*2200	1800*2250*2200	1600*2100	3000*2800	3000*2800	4200	1500
	1						4300	1600
2500	0.5	2000*2500*2200	2000*2450*2200	1800*2100	3200*3000	3300*3000	4300	1500
	1						4400	1600
3000	0.5	2100*2700*2200	2100*2650*2200	1800*2100	3300*3200	3400*3200	4300	1500
							2300*2500*2200	2300*2450*2200
	1	2100*2700*2200	2100*2650*2200		3300*3200	3400*3200	4400	1600
							2300*2500*2200	2300*2450*2200

Note: 1. This type of elevator is not suitable for using a forklift to enter the car as a cargo handling device.

ATLAS-T8	Speed (m/s)	Car Dimension(mm)		Door Opening Size (mm)	Hoistway Size(mm)		Overhead Height	Pit Depth
		Inner Size (single door)	Inner Size (dual door)		Width x Depth (single door)	Width x Depth (dual door)		
4000	0.5	2300*3200*2500	2300*3150*2500	1800*2400	3450*3550	3450*3700	4500	1600
	1						4550	1600
5000	0.5	2800*3100*2500	2800*3050*2500	2400*2400	4200*3550	4250*3600	4500	1600
	1						4550	1600

# ATLAS-T8A

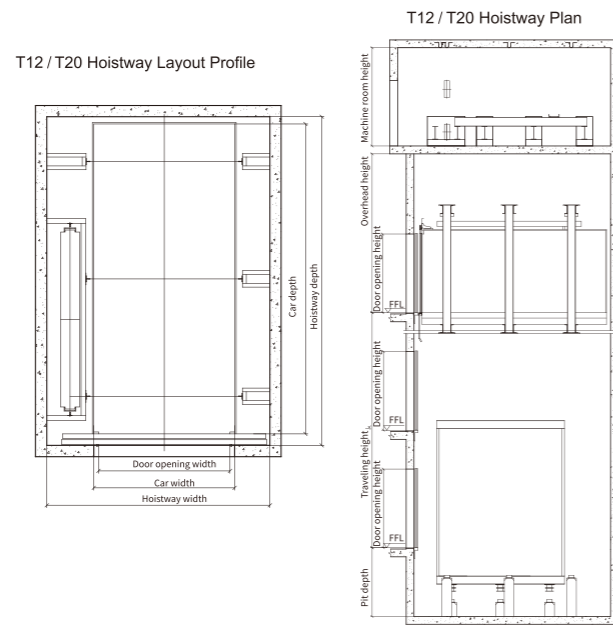
Small Machine Room Cargo Elevator



ATLAS-T8A	Speed (m/s)	Car Dimension(mm)	Door Opening Size (mm)	Hoistway Size(mm)		Overhead Height	Pit Depth
				Width x Depth (single door)	Width x Depth (dual door)		
4000	0.5	2300*3200*2500	2000*2400	3550*3650	3550*3750	4550	1600
	1.0						
5000	0.5	2800*3100*2500	2400*2400	4100*3550	4100*3650	4550	1600
	1.0						

# ATLAS-T12/T20

Small Machine Room Cargo Elevator

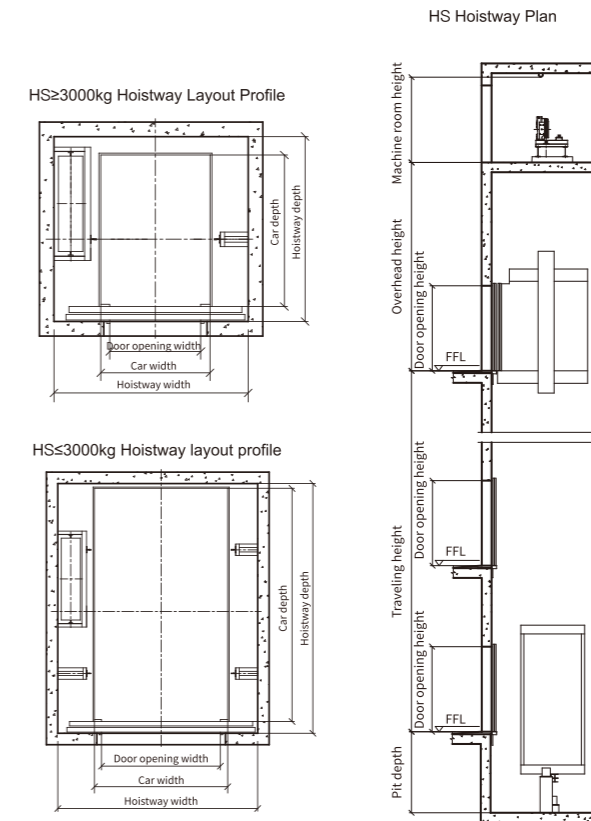


ATLAS-T12 Capacity (kg)	Speed (m/s)	Car Dimension(mm)		Door Opening Size (mm)	Hoistway Size(mm)		Overhead Height	Pit Depth
		Inner Size		Center Opening	Width x Depth (single door)	Width x Depth (dual door)		
6000	0.5	2500*4200*2500		2400*2400	4100*4600	4100*4750	4550	1750
	0.63	2500*4200*2500		2400*2400	4100*4600	4100*4750		
7000	0.5	2800*4300*2500		2500*2400	4400*4700	4400*4850	4550	1750
	0.63	2800*4300*2500		2500*2400	4400*4700	4400*4850		
8000	0.5	2800*4900*2500		2500*2400	4400*5300	4400*5450	4800	1750
	0.63	2800*4900*2500		2500*2400	4400*5300	4400*5450		
9000	0.5	2500*5900*2500		2500*2400	4250*6300	4250*6450	4800	1750
6000	1.0	2500*4200*2500		2400*2400	4100*4600	4100*4750	4550	1750
7000	1.0	2800*4300*2500		2500*2400	4400*4700	4400*4850	4550	1750
8000	1.0	2800*4900*2500		2500*2400	4400*5300	4400*5450	4800	1750
9000	1.0	2500*5900*2500		2500*2400	4250*6300	4250*6450	4800	1750

ATLAS-T20 Capacity (kg)	Speed (m/s)	Car Dimension(mm)		Door Opening Size (mm)	Hoistway Size(mm)		Overhead Height	Pit Depth
		Inner Size		Center Opening	Width x Depth (single door)	Width x Depth (dual door)		
10000	0.5	3000*5600*2500		2800*2400	4750*6000	4750*6150	4850	2000
11000		3000*6100*2500			4750*6500	4750*6650		
12000		3000*6600*2500			4750*7000	4750*7150		
13000		3000*7100*2500			4750*7500	4750*7650		
14000		3500*6600*2500			5150*7000	5150*7150		
15000		3500*7000*2500		5150*7400	5150*7550			
16000		3500*7500*2500		5150*7900	5150*8050			
17000		3500*8000*2500		5150*8400	5150*8550			
18000		3800*7700*2500		5450*8100	5450*8250			
19000		3800*8100*2500		5450*8500	5450*8650			
20000	3800*8500*2500		5450*8900	5450*9050				
10000	0.63	3000*5600*2500		2800*2400	4750*6000	4750*6150	4850	
11000		3000*6100*2500			4750*6500	4750*6650		
12000		3000*6600*2500			4750*7000	4750*7150		
13000		3000*7100*2500			4750*7500	4750*7650		
14000		3500*6600*2500			5150*7000	5150*7150		
15000	3500*7000*2500		5150*7400	5150*7550				
10000	1.0	3000*5600*2500		2800*2400	4750*6000	4750*6150	4850	

# ATLAS-HS

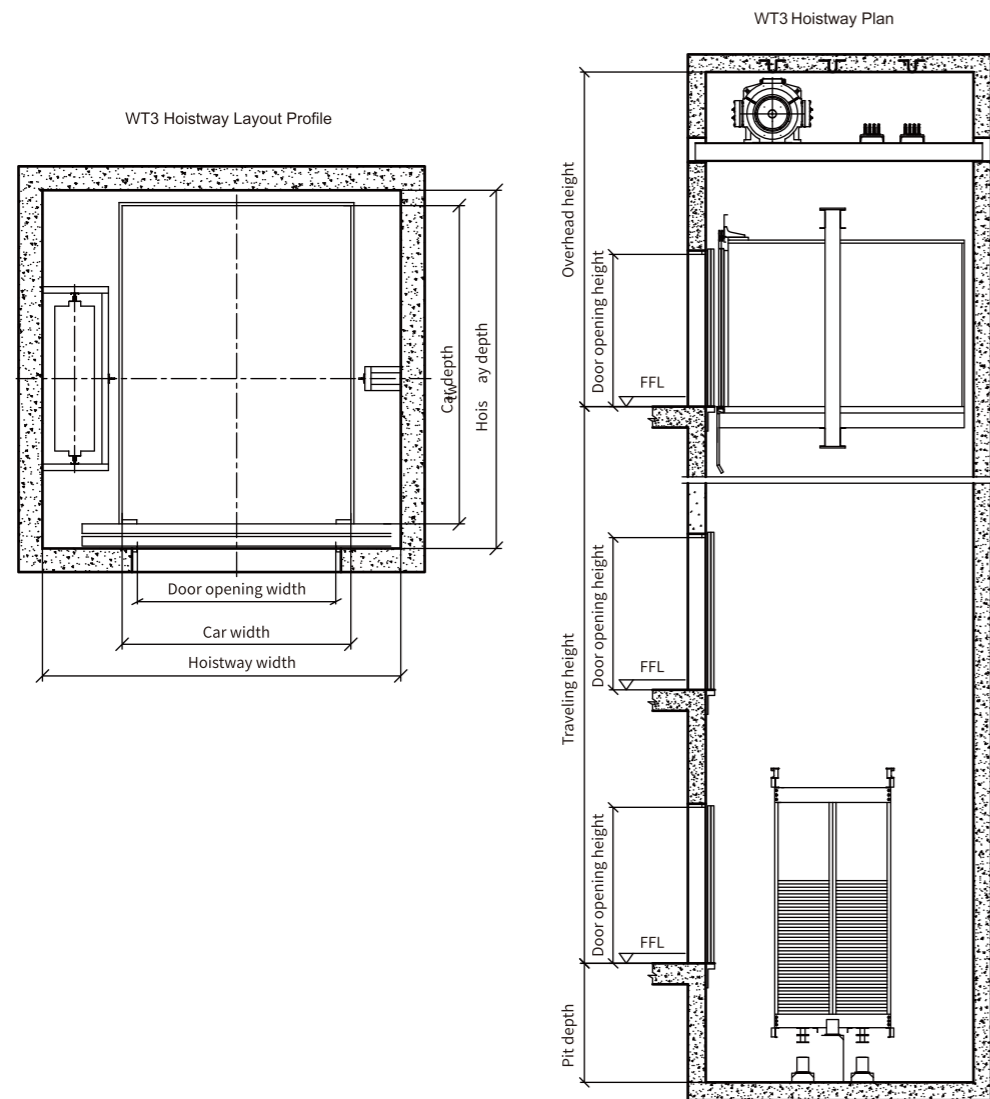
Small Machine Room Cargo Elevator



ATLAS-HS Capacity (kg)	Speed (m/s)	Car Dimension(mm)		Door Opening Size (mm)	Hoistway Size(mm)		Overhead Height	Pit Depth
		Inner Size		Center Opening	Width x Depth (single door)	Width x Depth (dual door)		
2000	1.5	1800*2300*2200		1600*2100	3050*2800		4450	1550
	2	1800*2300*2200		1600*2100	3050*2800		4600	1600
3000	1.5	2100*2700*2200		1800*2100	3400*3200		4450	1550
	2	2100*2700*2200		1800*2100	3400*3200		4600	1600
5000	1.5	2500*3500*2500		2400*2400	4000*3850	4000*4000	4600	1700
	2	2500*3500*2500		2400*2400	4000*3850	4000*4000	4800	1750

# ATLAS-WT3

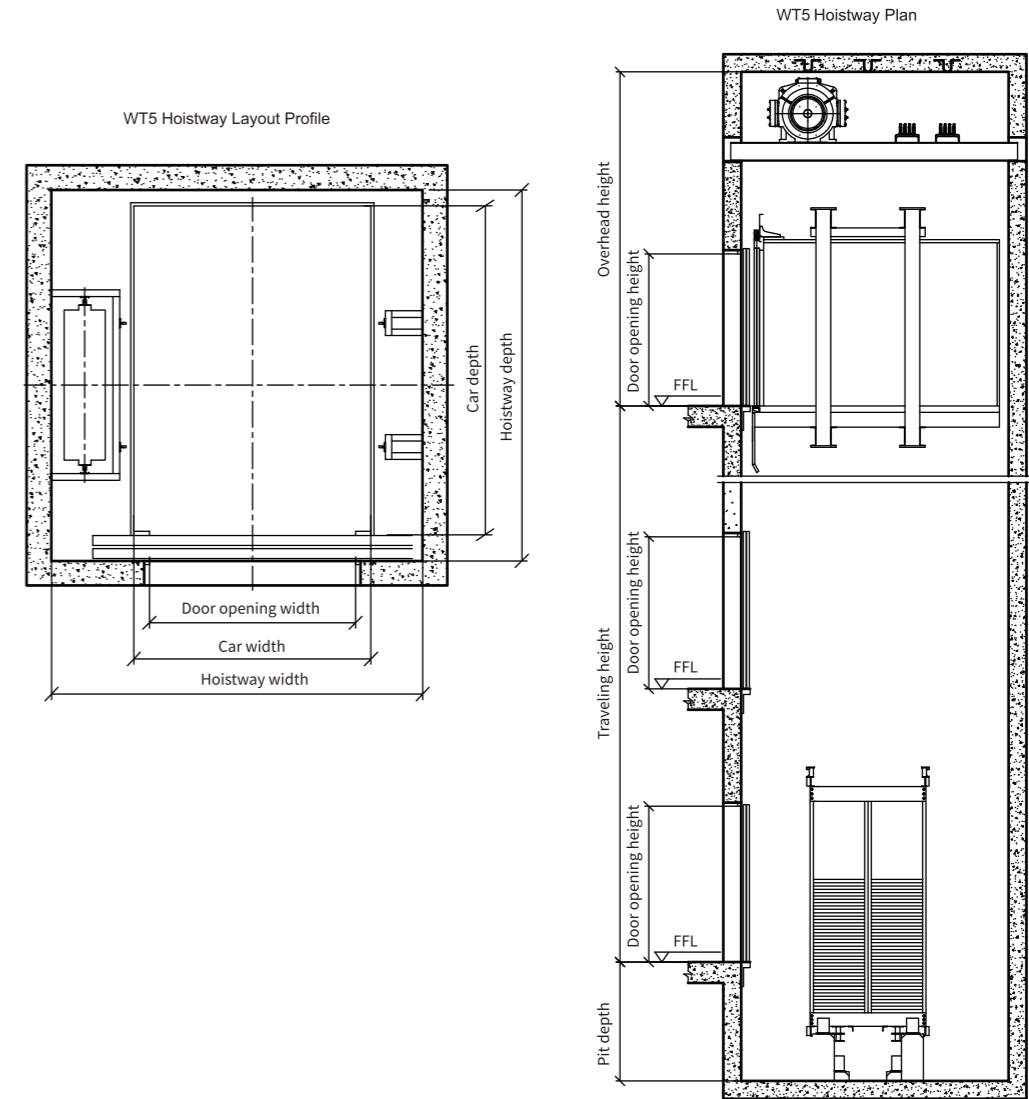
Machine Roomless Cargo Elevator



ATLAS-WT3	Speed (m/s)	Car Dimension(mm)	Door Opening Size (mm)	Hoistway Size(mm)		Overhead Height	Pit Depth
Capacity (kg)		Inner Size	Center Opening	Width x Depth (single door)	Width x Depth (dual door)		
2000	0.5 1	1800*2300*2200	1600*2100	3000*2700	3000*2800	4300	1500
2500	0.5 1	2000*2500*2200	1800*2100	3300*2900	3300*3000	4400	
3000	0.5 1	2300*2500*2200	2000*2100	3600*2900	3600*3000	4400	

# ATLAS-WT5

Machine Roomless Cargo Elevator

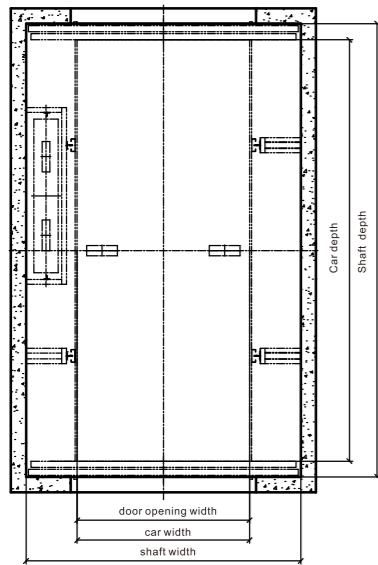


ATLAS-WT5	Speed (m/s)	Car Dimension(mm)	Door Opening Size (mm)	Hoistway Size(mm)		Overhead Height	Pit Depth
Capacity (kg)		Inner Size	Center Opening	Width x Depth (single door)	Width x Depth (dual door)		
4000	0.5 1	2300*3200*2200	2000*2100	3600*3600	3600*3700	4650	1700
5000	0.5 1	2500*3500*2200	2400*2100	4000*3900	4000*4000		

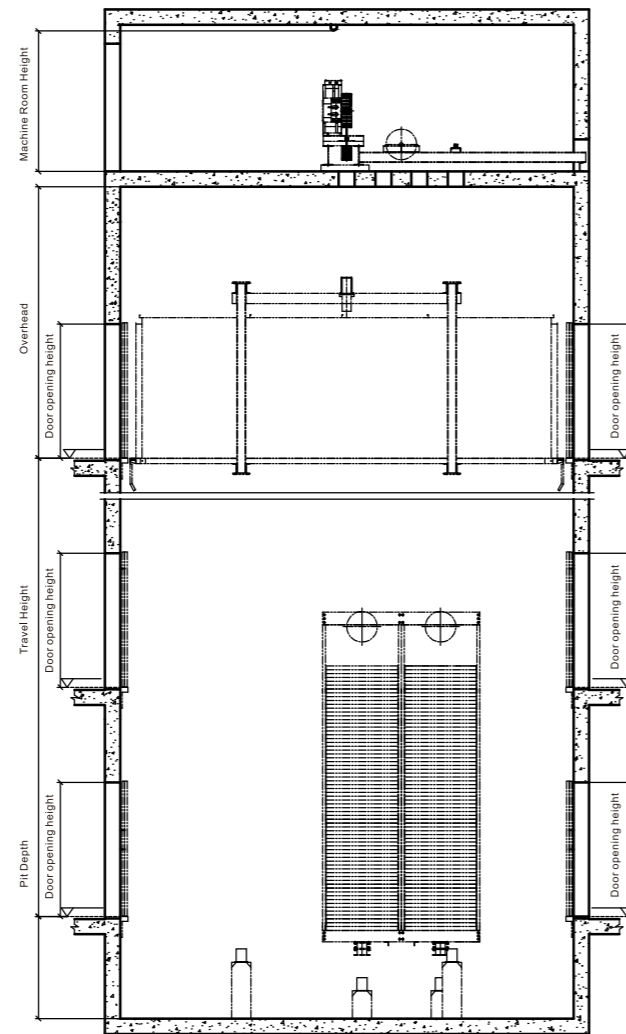
# FPA-T8

Machine Room Car Lift

T8 Shaft Layout Profile



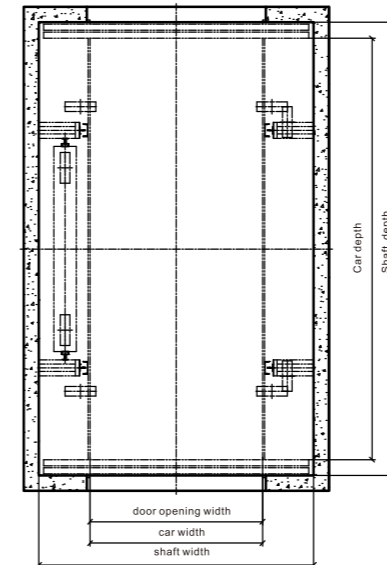
T8 Shaft Layout Profile



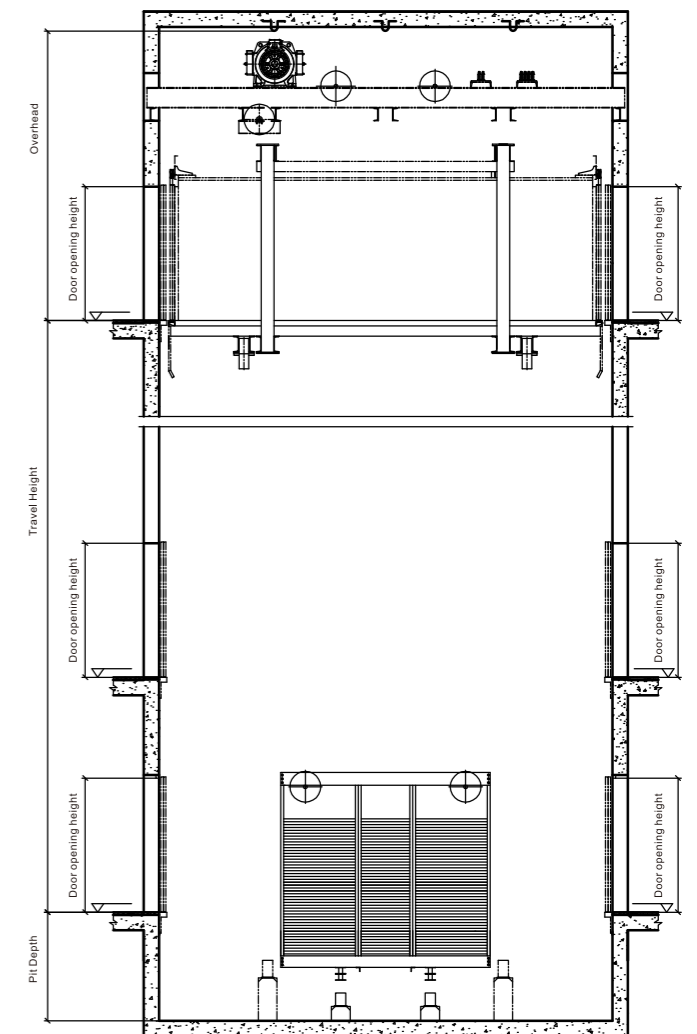
# FPA-WT5

Machine Roomless Car Lift

Wt5 Shaft Layout Profile



Wt5 Shaft Layout Profile



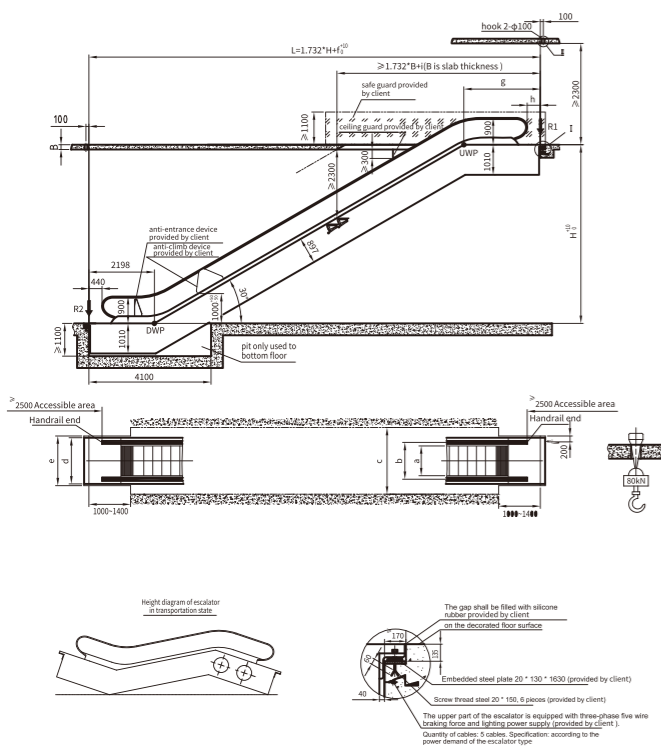
Capacity (kg)	Speed (m/s)	Car Size(mm) Width*Depth*Height	Door Opening Size(mm) Width*Height	Shaft Size(mm)	OH(mm)	Pit Depth (mm)	Max Travel Height (mm)	Machine Room Size(mm) (Width*Depth*Height)
3200	0.5	2500*5900*2200	2500*2100	4100*6400	4200	1600	45	4100*6400*2200
	1				4250			
4000	0.5	2600*6300*2200	2600*2100	4200*6800	4200	1600	45	4200*6800*2200
	1				4250			
5000	0.5	2700*6600*2200	2700*2100	4300*7100	4200	1600	45	4300*7100*2200
	1				4250			

Capacity (kg)	Speed (m/s)	Car Size(mm) Width*Depth*Height	Door Opening Size(mm) Width*Height	Door Opening Type	Shaft Size(mm)	OH(mm)	Pit Depth (mm)	Max Travel Height (mm)
3200	0.5	2500*5900*2200	2500*2100	2 Panels Central Opening	4100*6400	4600	1700	45
	1							
4000	0.5	2600*6300*2200	2600*2100	2 Panels Central Opening	4200*6800	4600	1700	45
	1							
5000	0.5	2700*6600*2200	2700*2100	2 Panels Central Opening	4300*7100	4600	1700	45
	1							

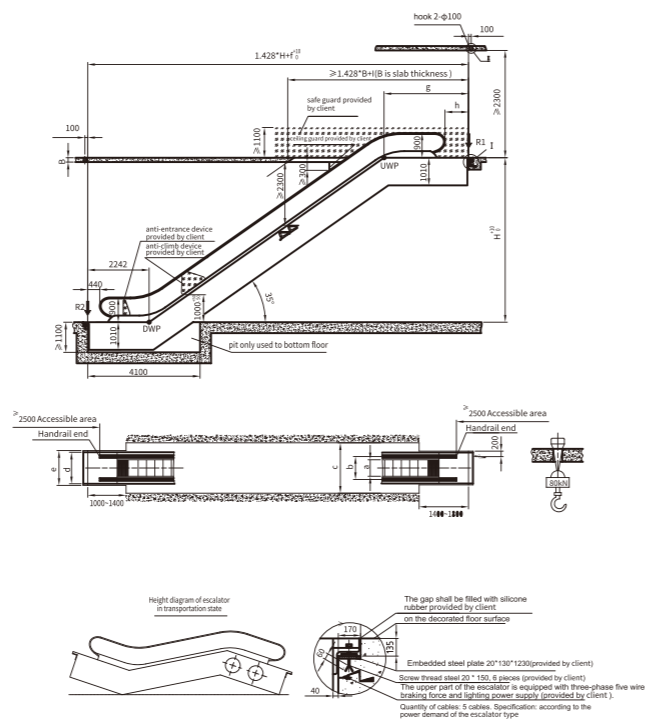
# GRACES-ID

## Escalator

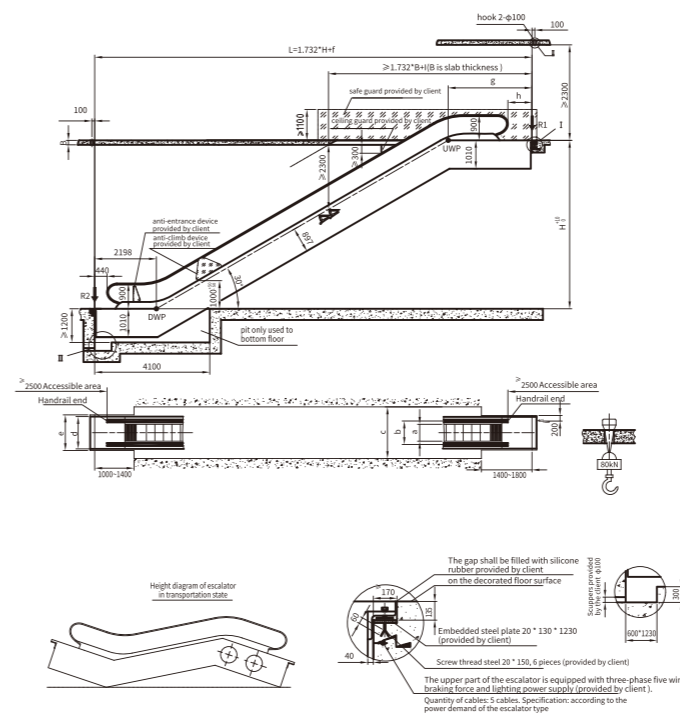
GRACES ID-30° (H≤6m)



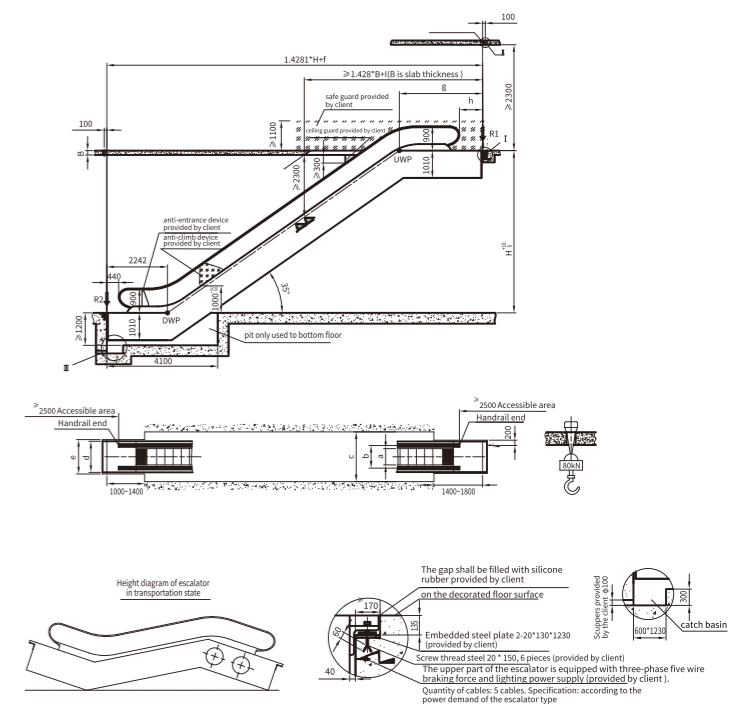
GRACES ID-35° (H≤6m)



GRACES III-30° (H≤6m)



GRACES III-35° (H≤6m)



GRACES ID-30° Step Width (mm)	Travel Height (mm)	Single Escalator weight (kg)	R1 (kN)	R2 (kN)	Motor Power (kw)
600	3000	5700	46	41	5.5
	3500	6000	49	44	
	4000	6400	52	47	
	4500	6800	56	50	
	5000	7100	59	53	
	5500	7500	62	56	
800	6000	7900	65	59	8
	3000	5900	52	47	
	3500	6300	56	50	
	4000	6700	60	54	
	4500	7100	64	57	
	5000	7400	68	60	
1000	5500	8200	74	66	11
	6000	8600	78	69	
	3000	6300	59	53	
	3500	6700	64	57	
	4000	7100	68	61	
	4500	7500	73	65	

GRACES ID-35° Step Width (mm)	Travel Height (mm)	Single Escalator weight (kg)	R1 (kN)	R2 (kN)	Motor Power (kw)
600	3000	5400	43	39	5.5
	3500	5700	46	41	
	4000	6000	49	44	
	4500	6400	52	46	
	5000	6700	54	49	
	5500	7000	57	51	
800	6000	7300	60	54	8
	3000	5600	49	44	
	3500	6000	52	47	
	4000	6300	56	50	
	4500	6600	59	53	
	5000	7000	62	56	
1000	5500	7300	65	59	11
	6000	7600	69	61	
	3000	6000	56	50	
	3500	6400	60	53	
	4000	6700	64	57	
	4500	7100	67	60	

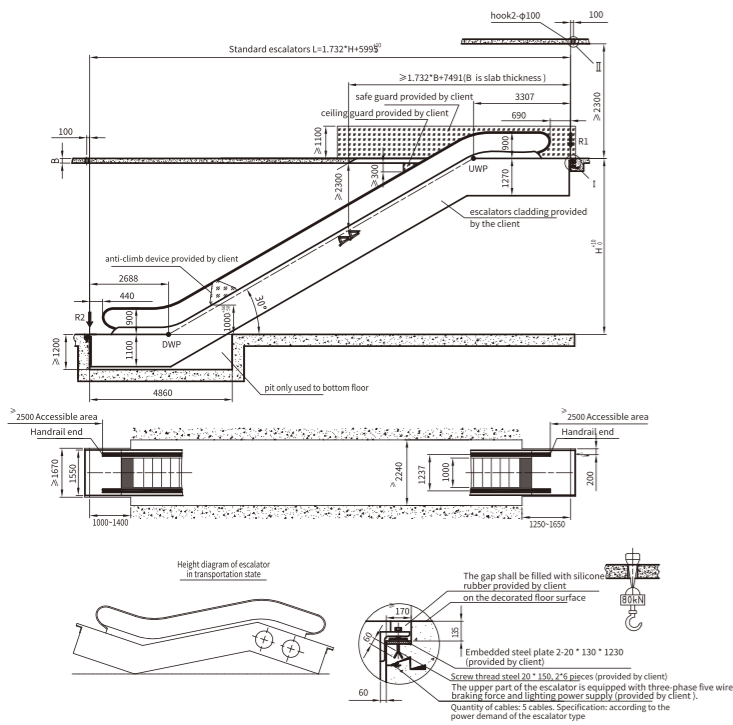
GRACES III-30° Step Width (mm)	Travel Height (mm)	Single Escalator weight (kg)	R1 (kN)	R2 (kN)	Motor Power (kw)
600	3000	5700	46	41	5.5
	3500	6000	49	44	
	4000	6400	52	47	
	4500	6800	56	50	
	5000	7100	59	53	
	5500	7500	62	56	
800	6000	7900	65	59	8
	3000	5900	52	47	
	3500	6300	56	50	
	4000	6700	60	54	
	4500	7100	64	57	
	5000	7400	68	60	
1000	5500	8200	74	66	11
	6000	8600	78	69	
	3000	6300	59	53	
	3500	6700	64	57	
	4000	7100	68	61	
	4500	7500	73	65	

GRACES III-35° Step Width (mm)	Travel Height (mm)	Single Escalator weight (kg)	R1 (kN)	R2 (kN)	Motor Power (kw)
600	3000	5400	43	39	5.5
	3500	5700	46	41	
	4000	6000	49	44	
	4500	6400	52	46	
	5000	6700	54	49	
	5500	7000	57	51	
800	6000	7300	60	54	8
	3000	5600	49	44	
	3500	6000	52	47	
	4000	6300	56	50	
	4500	6600	59	53	
	5000	7000	62	56	
1000	5500	7300	65	59	11
	6000	7600	69	61	
	3000	6000	56	50	
	3500	6400	60	53	
	4000	6700	64	57	
	4500	7100	67	60	

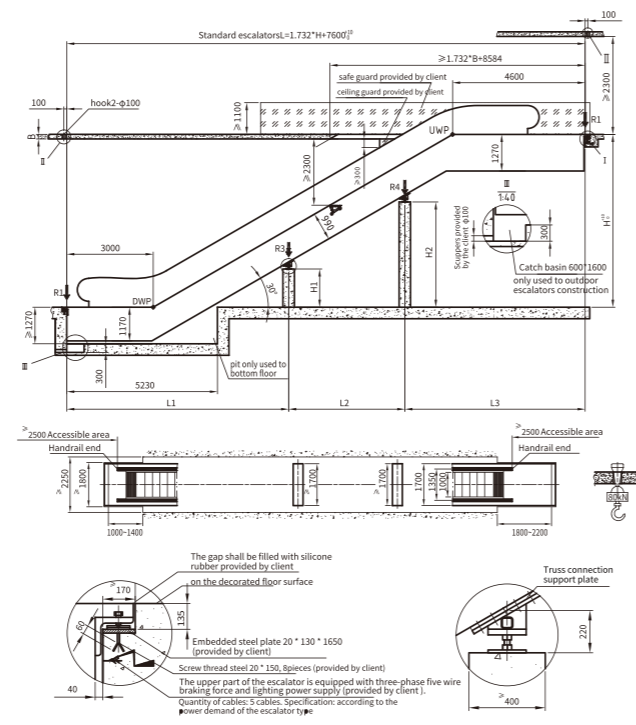
# GRACES-LD/HD

## Escalator

GRACES LD-30°(H≤5m)



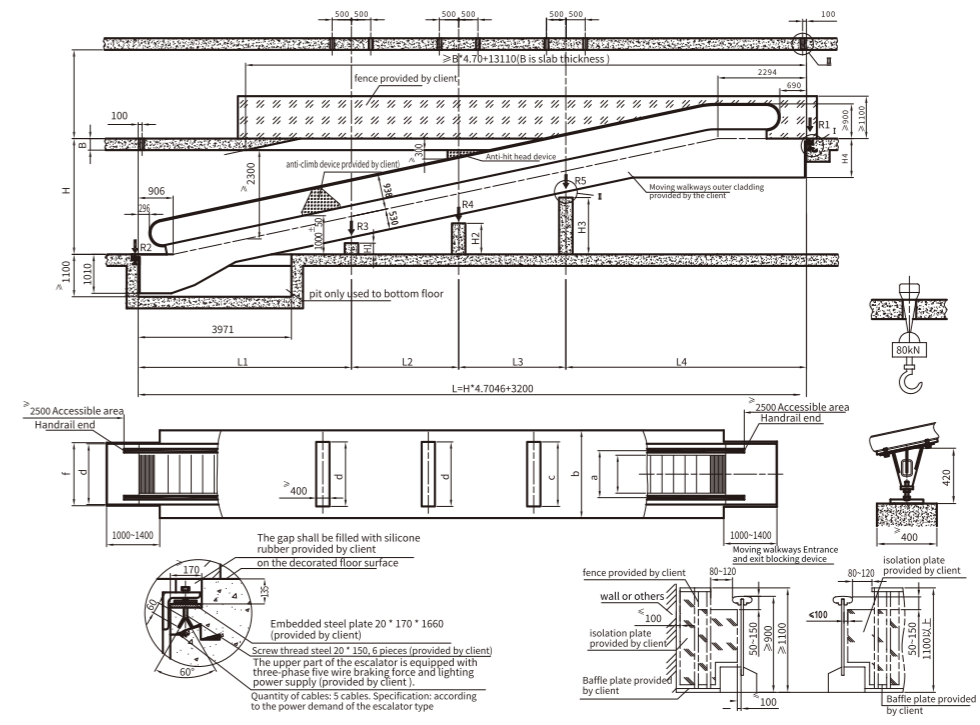
GRACES HD-30°(H≤12m)



# T2

## Moving Walks

T2-12°(H≤7.5m)



GRACES LD-30°	Travel Height(mm)	Single Escalator weight(kg)	R1 (kN)	R2 (kN)	Motor Power (kw)
Step Width(mm)					
1000	3000	6300	76	61	8
	3500	6700	80	65	
	4000	7100	84	69	11
	4500	7500	88	73	
	5000	8300	93	78	

GRACES HD-30°	Travel Height(mm)	R1 (kN)	R2 (kN)	R3 (kN)	R4 (kN)	H1 (mm)	H2 (mm)	L1 (mm)	L2 (mm)	L3 (mm)
Step Width(mm)										
1000	2000≤H≤4500	L1*q1+17	L1*q1+10	/	/	/	/	L	/	/
	4500≤H≤6000	L1*q1+17	L1*q1+10	/	/	/	/	L	/	/
	6000≤H≤8500	L2*q1+17	L1*q1+10	(L1+L2)*q1+15	/	H/2-926	H/2-926	L/2	L/2	/
	8500≤H≤12000	L3*q1+17	L1*q1+10	(L1+L2)*q1+15	(L2+L3)*q2+15	H/3-1658	H/3-1658	L/3	L/3	L/3

### Applicable Scope Of Each Escalator Type

Model	Specification		Applicable Environmental Scope
	30°	35°	
GRACES-ID	1500mm≤H≤8000mm	1500mm≤H≤6000mm	Indoor commercial buildings
GRACES-III	1500mm≤H≤8000mm	1500mm≤H≤6000mm	Outdoor commercial buildings
GRACES-LD	1500mm≤H≤9500mm	—	Outdoor/indoor (subway station, high-speed railway station, airport and other public transport)
GRACES-HD	1500mm≤H≤18000mm	—	Outdoor/indoor (subway station, high-speed railway station, airport and other public transport)
T2	L≤48906mm		Indoor commercial buildings

Note: H represents the lifting height (mm), and L represents the length of the use section of the moving walks(mm).

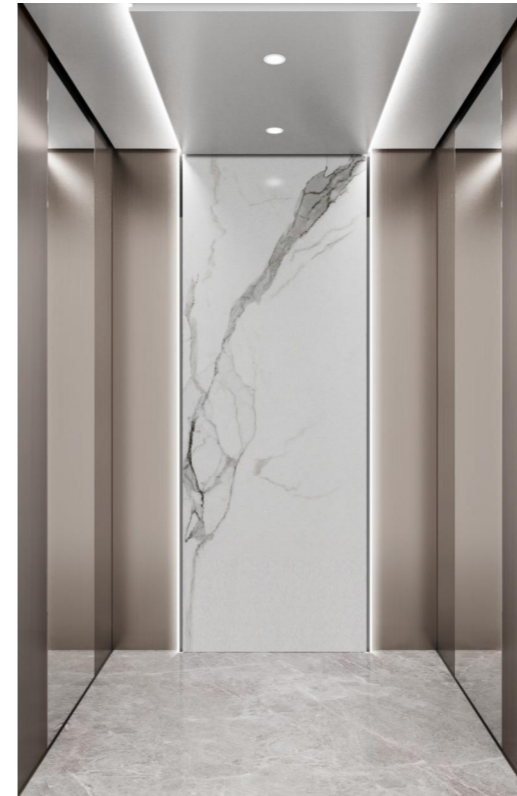
T2-12°	Travel Height (mm)	Motor Power (kw)	R1 (kN)	R2 (kN)	R3 (kN)	R4 (kN)	R5 (kN)	H1 (mm)	H2 (mm)	H3 (mm)	H4 (mm)	L1 (mm)	L2 (mm)	L3 (mm)	L4 (mm)	
Step Width (mm)																
800	1600≤H≤1856	5.5	L*q+9.5	L*q+4.5	/	/	/	/	/	/	/	L	/	/	/	
	1856<H≤2500		L2*q+9.5	L1*q+4.5	(L1+L2)*1.3*q	/	/	H/2-840	/	/	/	L/2	L/2	/	/	
	2500<H≤4000	8	L2*q+9.5	L1*q+4.5	(L1+L2)*1.3*q	/	/	H/2-840	/	/	1010	L/2	L/2	/	/	
	4000<H≤4353		L2*q+9.5	L1*q+4.5	(L1+L2)*1.3*q	/	/	H/2-840	/	/	/	L/2	L/2	/	/	
	4353<H≤5500	11	L2*q+9.5	L1*q+4.5	(L1+L2)*1.3*q	(L2+L3)*1.3*q	/	H/3-953	2H/3-726	/	/	/	L/3	L/3	L/3	/
	5500<H≤6849		L3*q+9.5	L1*q+4.5	(L1+L2)*1.3*q	(L2+L3)*1.3*q	/	H/3-953	2H/3-726	/	/	1110	L/3	L/3	L/3	/
6849<H≤7500	15	L4*q+9.5	L1*q+4.5	(L1+L2)*1.3*q	(L2+L3)*1.3*q	(L3+L4)*1.3*q	H/4-1010	H/2-840	3H/4-670	/	/	L/4	L/4	L/4	L/4	
1000	1600≤H≤1856	5.5	L*q+11	L*q+5	/	/	/	/	/	/	/	L	/	/	/	
	1856<H≤2500		L2*q+11	L1*q+5	(L1+L2)*1.3*q	/	/	H/2-840	/	/	/	/	/	/	/	
	2500<H≤3500	8	L2*q+11	L1*q+5	(L1+L2)*1.3*q	/	/	H/2-840	/	/	1010	L/2	L/2	/	/	
	3500<H≤4353		L3*q+11	L1*q+5	(L1+L2)*1.3*q	/	/	H/2-840	/	/	/	L/3	L/3	L/3	L/3	
	4353<H≤5000	11	L3*q+11	L1*q+5	(L1+L2)*1.3*q	(L2+L3)*1.3*q	/	H/3-953	2H/3-726	/	/	/	L/3	L/3	L/3	L/3
	5000<H≤6849		L4*q+11	L1*q+5	(L1+L2)*1.3*q	(L2+L3)*1.3*q	/	H/3-953	H/3-1658	/	/	1110	L/3	L/3	L/3	L/3
6849<H≤7500	15	L4*q+11	L1*q+5	(L1+L2)*1.3*q	(L2+L3)*1.3*q	(L3+L4)*1.3*q	H/4-1010	H/2-840	3H/4-670	/	/	L/4	L/4	L/4	L/4	

# 2

## Decoration Configuration

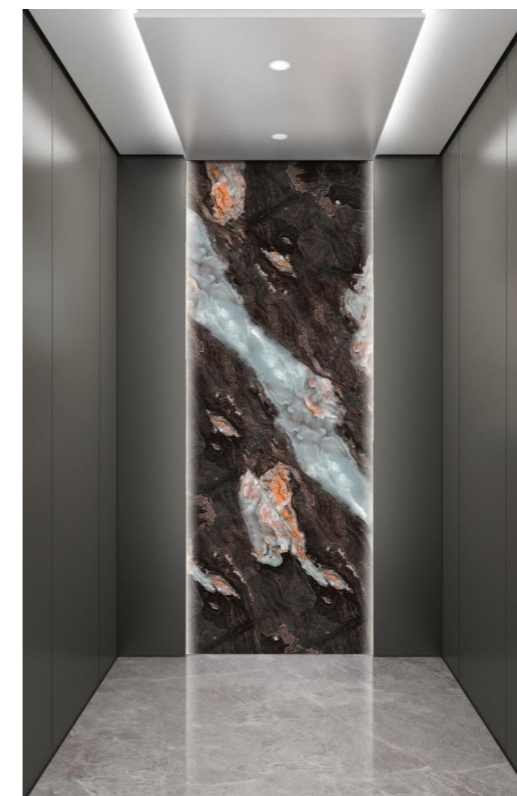
Passenger Elevator .....	23
Panoramic Elevator .....	36
Decoration Configuration .....	37
Freight Elevator .....	41

## Passenger Elevator



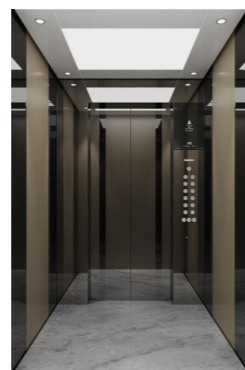
### CAR519

**COP:** COP317 (HSL02101 Light Coffee Brushed 3D Digital Printing Steel Plate\_ Anti-Fingerprint)  
**Celling:** C109 (White Spray Plate + Hidden Light Strip +LED Ceiling Light)  
**Car Wall:** **Front Wall:** HSL02101 Light Coffee Brushed 3D Digital Printing Steel Plate\_ Anti-Fingerprint **Side Walls:** HSL02101 Light Coffee Brushed 3D Digital Printing Steel Plate\_ Anti-Fingerprint + Mirror Stainless Steel **Rear Wall:** HSL02101 Light Coffee Brushed 3D Digital Printing Steel Plate\_ Anti-Fingerprint + HSD04001 Pure White 3D Digital Printing Steel Plate\_ High-Gloss Anti-Fingerprint + Hidden Light Strip + Black Trim Strip  
**Car Door:** HSL02101 Light Coffee Brushed 3D Digital Printing Steel Plate\_ Anti-Fingerprint  
**Floor:** F115 (Wear-Resistant PVC)  
**Trim Strip:**Black Trim Strip



### CAR520

**COP:** COP317 (Mirror Stainless Steel)  
**Celling:** C109 (White Spray Plate + Hidden Light Strip +LED Ceiling Light)  
**Car Wall:**  
**Front Wall:** Mirror Stainless Steel  
**Side Walls:** HSC031 Space Gray 3D Digital Printing Steel Plate\_ Anti-Fingerprint  
**Rear Wall:** HSC031 Space Gray 3D Digital Printing Steel Plate\_ Anti-Fingerprint + HS007 Volcanic Rock 3D Digital Printing Steel Plate\_ High-Gloss Anti-Fingerprint +Hidden Light Strip  
**Car Door:** LDP200 (Mirror Stainless Steel)  
**Floor:** F115 (Wear-Resistant PVC)  
**Trim Strip:**Black Trim Strip



### CAR521

**COP:** COP327 (Mirror Stainless Steel Plated Black Titanium)

**Ceiling:** C110 (White Spray Plate + PC Light Transmission Plate + LED Ceiling Light)

**Car Wall:**

**Front Wall:** Mirror Stainless Steel Plated Black Titanium

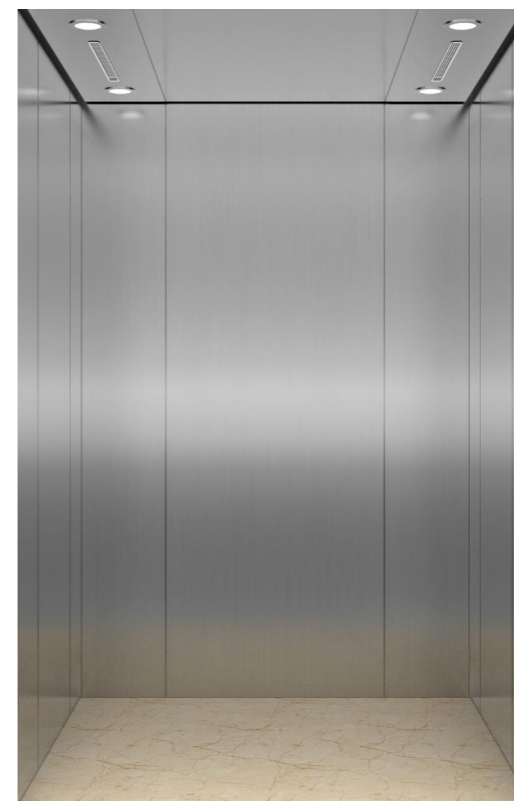
**Side Walls:** HSM028 Straight Grain Wood Grain 3D Digital Printing Steel Plate\_Anti-Fingerprint + Mirror Stainless Steel Plated Black Titanium

**Rear Wall:** HSM028 Straight Grain Wood Grain 3D Digital Printing Steel Plate\_Anti-Fingerprint + Mirror Stainless Steel Plated Black Titanium

**Car Door:** LDP400 (Mirror Stainless Steel Plated Black Titanium)

**Floor:** F116 (Italian Wear-Resistant PVC)

**Trim Strip:** Black Trim Strip



### CAR211(Standard)

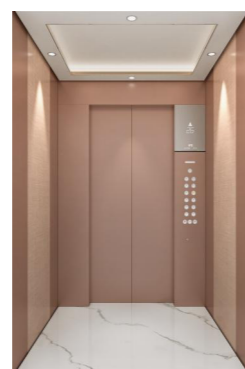
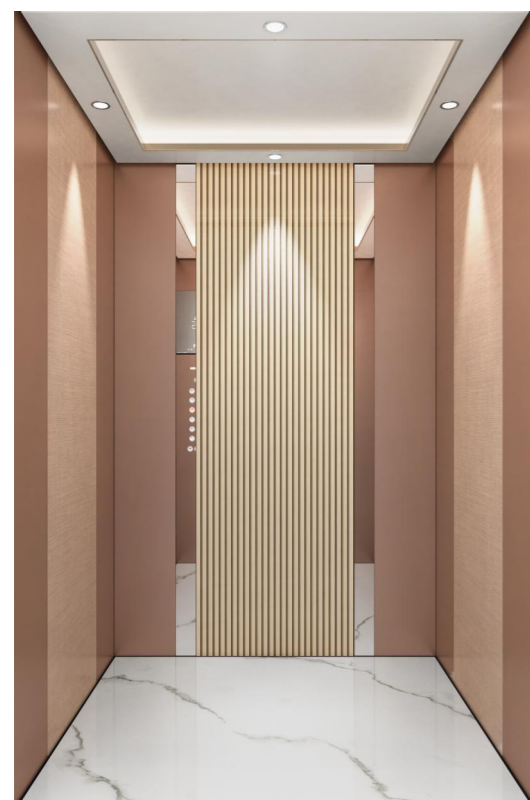
**COP:** COP209 Hairline Stainless Steel/Dark GreyAcrylic/Dot Matrix Display

**Ceiling:** C209Hairline Stainless Steel/LED Ceiling

**Car Wall:** Hairline Stainless Steel

**Car Door:** LDP200 Hairline Stainless Steel

**Floor:** F01-00 Wear-Resistant PVC



### CAR522

**COP:** COP327 (HSC03402 Sanded Vanilla 3D Digital Printing Steel Plate\_Anti-Fingerprint)

**Ceiling:**C111 (White Spray Plate + Mirror Stainless Steel Rose Gold Decorative Frame + Hidden Light Strip + LED Ceiling Light)

**Car Wall:** Front Wall: HSC03402 Sanded Vanilla 3D Digital Printing Steel Plate\_Anti-Fingerprint

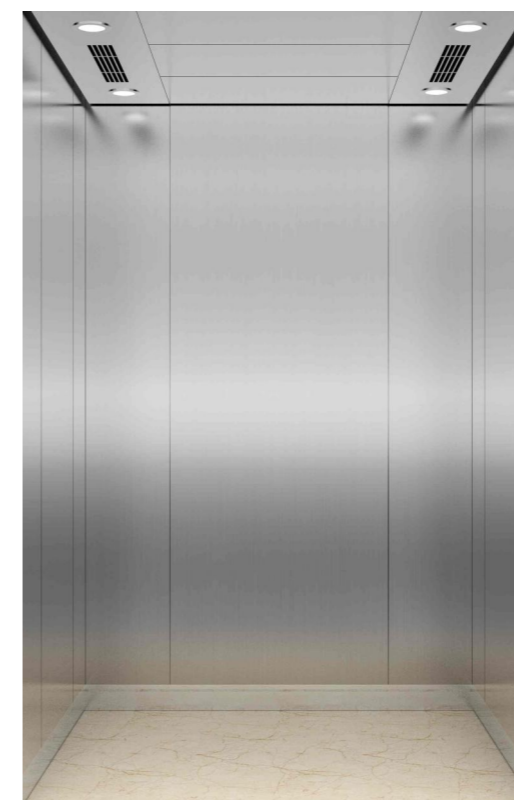
**Side Walls:** HSC03402 Sanded Vanilla 3D Digital Printing Steel Plate\_Anti-Fingerprint + 0892 Silk Pattern 3D Digital Printing Steel Plate\_Anti-Fingerprint

**Rear Wall:** WPC Tech White Oak Great Wall Panel + Mirror Stainless Steel + HSC03402 Sanded Vanilla 3D Digital Printing Steel Plate\_Anti-Fingerprint

**Car Door:** LDP100 (HSC03402 Sanded Vanilla 3D Digital Printing Steel Plate\_Anti-Fingerprint)

**Floor:** F109 (Jazz White Wear-Resistant PVC)

**Trim Strip:** Black Trim Strip



### CAR75-11(Standard)

**COP:** COP217 (Hairline stainless steel /Acrylic/ White Color Dot matrix LED Display)

**Ceiling:** C19 (Hairline stainless steel / LED ceiling light)

**Car Wall:** CW03-20 (Hairline stainless steel )

**Car Door:** LDP200 (Hairline stainless steel)

**Floor:** F01-00 Wear-Resistant PVC





### CAR219

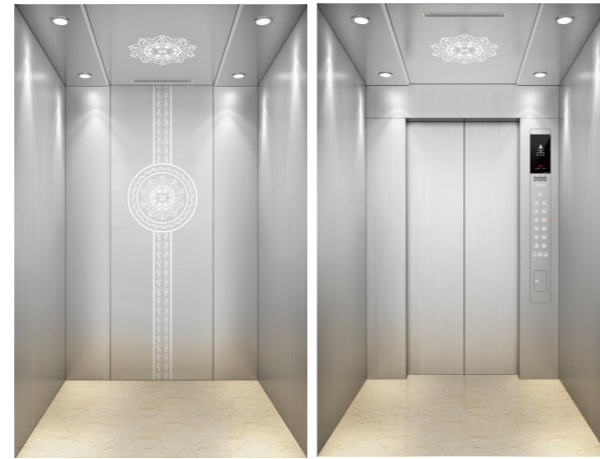
**COP:** COP217 (Split , hairline stainless steel+deep gray acrylic +segment display)

**Celling:** C217 (Hairline stainless steel+LED ceiling light)

**Car Wall:** Hairline stainless steel

**Car Door:** LDP200 (Hairline stainless steel)

**Floor:** F01-00 ( PVC)



### CAR220-EP104

**COP:** COP217 (Split , hairline stainless steel+deep gray acrylic +segment display)

**Celling:** C108 (Hairline stainless steel+pattern+LED ceiling light)

**Car Wall:**

Front Wall: Hairline stainless steel

Side Wall: Hairline stainless steel

Rear Wall: Hairline stainless steel on both sides + center with carved design (EP104)

**Car Door:** LDP200 (Hairline stainless steel)

**Floor:** F01-00 ( PVC)



### CAR220-EP101

**COP:** COP217 (Split , hairline stainless steel+deep gray acrylic + segment display)

**Celling:** C217 (Hairline stainless steel+LED ceiling light)

**Car Wall:**

Front Wall: Hairline stainless steel

Side Wall: Hairline stainless steel

Rear Wall: Hairline stainless steel on both sides + mirror stainless steel with carved design in the middle (EP101)

**Car Door:** LDP200 (Hairline stainless steel)

**Floor:** F01-00 ( PVC)



### CAR322

**COP:** COP217 (Split , hairline stainless steel+deep gray acrylic + segment display)

**Celling:** C217 (Hairline stainless steel + LED ceiling light)

**Car Wall:**

Front wall: Hairline stainless steel

Side wall: Hairline stainless steel on both sides+Center wood grain decorative steel plate (MW1614 straight-grain betula wood)

Rear Wall: Hairline stainless steel on both sides+Center wood grain decorative steel plate (MW1614 straight-grain betula wood)

**Car Door:** LDP200 (Hairline stainless steel)

**Floor:** F102 ( PVC)



### CAR220-EP100

**COP:** COP217 (Split , hairline stainless steel+deep gray acrylic +segment display)

**Celling:** C217 (Hairline stainless steel + LED ceiling light)

**Car Wall:**

Front Wall: Hairline stainless steel

Side Wall: Hairline stainless steel

Rear Wall: Hairline stainless steel on both sides + center with carved design (EP100)

**Car Door:** LDP200 (Hairline stainless steel)

**Floor:** F01-00 ( PVC)



### CAR220-EP102

**COP:** COP217 (Split , hairline stainless steel+deep gray acrylic +segment display)

**Celling:** C217 (Hairline stainless steel + LED ceiling light)

**Car Wall:**

Front Wall: Hairline stainless steel

Side Wall: Hairline stainless steel

Rear Wall: Hairline stainless steel on both sides + center with carved design (EP102)

**Car Door:** LDP200 (Hairline stainless steel)

**Floor:** F102( PVC)



### CAR75-09

**COP:** COP217 (Mirror stainless steel + dark grey acrylic panel + dot-matrix display)

**Celling:** C19 (Hairline stainless steel + LED ceiling light)

**Car Wall:** CW03-07

Front Wall: Mirror stainless steel

Side Wall: Mirror stainless steel on both sides + hairline stainless steel in the middle

Rear Wall: Mirror stainless steel on both sides + hairline stainless steel in the middle

**Car Door:** LDP200 (Hairline stainless steel)

**Floor:** F01-00 ( PVC)



### CAR80-02

**COP:** COP217 (Hairline stainless steel panel + LED02W white dot-matrix display + B12C button)

**Celling:** C99-09 Hairline stainless steel+LED ceiling light+Mirror stainless steel with carved design EP006

**Car Wall:** CW01-05

Front Wall: Hairline stainless steel

Side Wall: Hairline stainless steel on both sides+Center mirror stainless steel with carved design (EP006)

Rear Wall: Hairline stainless steel on both sides+Center mirror stainless steel with carved design (EP006)

**Car Door:** LDP200 (Hairline stainless steel)

**Floor:** F01-00 ( PVC)



### CAR302

**COP:** COP327 (Integrated, hairline stainless steel+large segment LED display)

**Ceiling:** C217 (Hairline stainless steel+LED ceiling light)

**Car Wall:**

Front Wall: Hairline stainless steel

Side Walls: Decorative steel plates (MW1614 straight -grain betula wood) on both sides+center mirror stainless steel

Rear Wall: Decorative steel plates (MW1614 straight -grain betula wood) on both sides+center decorative steel plate (SW21B10 stone pattern)

**Car Door:** LDP200 (Hairline stainless steel)

**Flooring:** F102 ( PVC)



### CAR301

**COP:** COP217 (Split , hairline stainless steel+dark gray acrylic+ segment display)

**Ceiling:** C223 (Hairline stainless steel+PC translucent panel+LED ceiling light)

**Car Wall:**

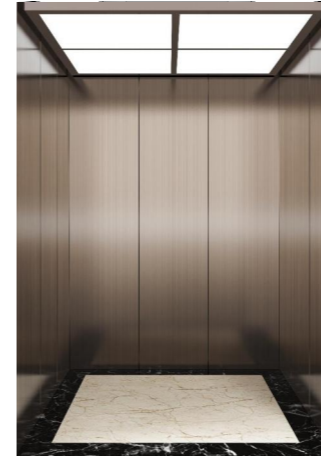
Front Wall: Hairline stainless steel

Side Walls: Hairline stainless steel on both sides+center decorative steel plate(MW21A31 rock wood grain)

Rear Wall: Hairline stainless steel on both sides+center decorative steel plate(MW21A31 rock wood grain)

**Car Door:** LDP200 (Hairline stainless steel)

**Flooring:** F112 ( PVC)



### CAR431

**Cabin Top Design:** C215 (Brown-plated brushed stainless steel + PC translucent sheet)

**Cabin Rear Design:** COP217 (Brown-plated brushed stainless steel + 02W white dot matrix LED display + B12C button)

**Cabin Side Design:** CAR431 Brown-plated brushed stainless steel

**Floor Design:** F02-10(PVC)

**Handrail Design:** N/A



### CAR516

**Cabin Top Design:** Metal-patterned film + hairline stainless steel bronze frame + light transmission film + hidden light slot

**Cabin Rear Design:** Marble pattern + hairline stainless steel bronze trim strip + mirror stainless steel bronze

**Cabin Side Design:** Marble pattern + hairline stainless steel bronze trim strip

**Floor Design:** Marble

**Handrail Design:** Hairline stainless steel bronze + leather on the rear side



### CAR410

**COP:** COP317 (Integrated, mirror stainless steel+8.4-inch LCD display)

**Ceiling:** C403 (Mirror stainless steel with antique bronze plating+ acrylic silk screen+LED ceiling light)

**Car Wall:**

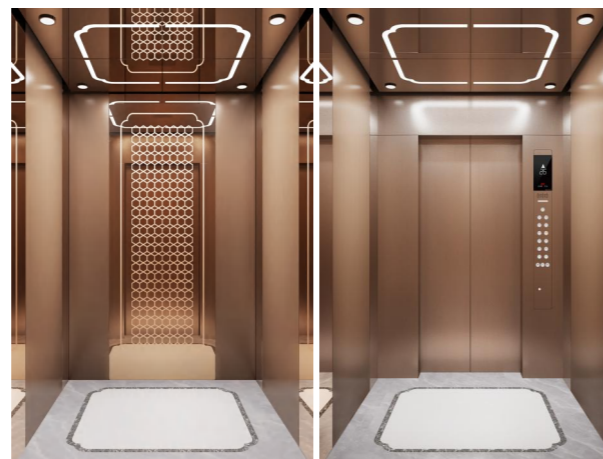
Front Wall: Mirror stainless steel

Side Wall: Mirror stainless steel on both sides+center hairline stainless steel with antique bronze plating

Rear Wall: Mirror stainless steel on both sides+center hairline stainless steel with antique bronze plating

**Car Door:** LDP200 (Mirror stainless steel)

**Flooring:** F114(PVC)



### CAR417

**COP:** COP217 (Split , antique bronze hairline stainless steel+dark gray acrylic glass+segment display)

**Ceiling:** C408 (Mirror stainless steel with antique bronze plating+PC translucent panel+LED ceiling light)

**Car Wall:**

Front Wall: Antique bronze hairline stainless steel

Side Walls: Mirror stainless steel with antique bronze plating on both sides + center antique bronze hairline stainless steel

Rear Wall: Antique bronze hairline stainless steel on both sides+ center mirror stainless steel with antique bronze engraving

**Car Door:** LDP400 (Antique bronze hairline stainless steel)

**Floor:** F105 (PVC)



### CAR517

**Cabin Top Design:** White film decoration + random stainless steel bronze frame + hidden light slot + downlight

**Cabin Rear Design:** Craft glass

**Cabin Side Design:** Random stainless steel bronze + random stainless steel bronze trim + rock slab + craft glass + hidden light slot

**Floor Design:** Marble

**Handrail Design:** Random stainless steel bronze



### LZ-J-16

**Cabin Top Design:** Steel plate baked white paint, brown stainless steel edge, hidden lights around

**Cabin Rear Design:** Resin plate on both sides, steel plate in the middle

**Cabin Side Design:** resin plate

**Floor Design:** marble medallion

**Handrail Design:** Brown sandblasted stainless steel



### LZ-J-198

**Cabin Top Design:** Mirror stainless steel with hidden light strips on both sides  
**Cabin Rear Design:** Apple sand + anti-fingerprint, art glass in the middle  
**Cabin Side Design:** Apple sand + anti-fingerprint, primary color mirror stainless steel  
**Floor Design:** marble  
**Handrail Design:** Apple sand + anti-fingerprint



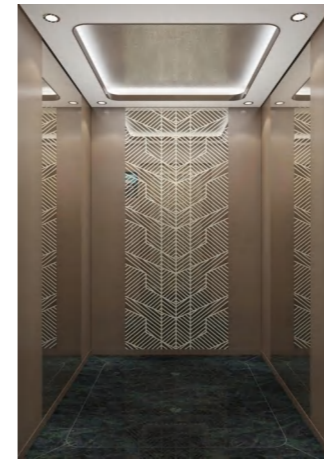
### LZ-J-333

**Cabin Top Design:** Steel plate baked white paint modeling, black titanium stainless steel closed edge, hidden lights around with lighting  
**Cabin Rear Design:** Marble composite aluminum honeycomb on both sides, ultra-white glass in the middle on both sides hidden lights  
**Cabin Side Design:** Marble composite aluminum honeycomb, black titanium hair grain stainless steel  
**Floor Design:** Marble composite aluminum honeycomb  
**Handrail Design:** Black titanium hair grain stainless steel



### LZ-J-268

**Cabin Top Design:** Brown stainless steel shape around, the middle lamp film  
**Cabin Rear Design:** Primary mirror stainless steel on both sides, rock slab in the middle  
**Cabin Side Design:** Mirror stainless steel, apple sand plated gray + anti-fingerprint  
**Floor Design:** marble  
**Handrail Design:** Apple sand plated gray + anti-fingerprint



### LZ-J-312

**Cabin Top Design:** Steel plate baked white paint, brown stainless steel, surrounded by hidden light belt  
**Cabin Rear Design:** Brown sandblasted stainless steel on both sides, brown etched mirror in the middle  
**Cabin Side Design:** Brown sandblasted stainless steel on both sides, mirror stainless steel in the middle  
**Floor Design:** Marble Mosaic  
**Handrail Design:** N/A



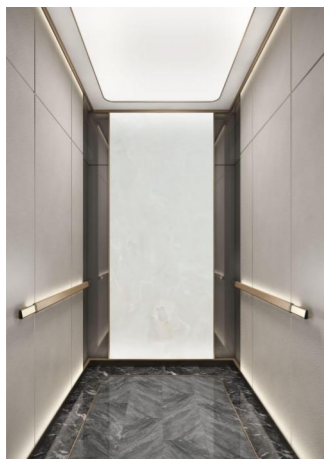
### LZ-J-311

**Cabin Top Design:** Steel plate baked white paint model, brown stainless steel edge, hidden lights around with lighting  
**Cabin Rear Design:** Wood veneer on both sides, ultra white glass in the middle on both sides hidden light strip  
**Cabin Side Design:** Wood grille molding, wood finish  
**Floor Design:** Marble Mosaic  
**Handrail Design:** Brown sandblasted stainless steel



### LZ-J-376

**Cabin Top Design:** Steel plate baked white paint molding, black titanium hair grain stainless steel closed edge, hidden around the lamp belt  
**Cabin Rear Design:** Black titanium mirror stainless steel on both sides, marble in the middle; Front wall: Black titanium mirror stainless steel  
**Cabin Side Design:** Both sides of the marble composite aluminum honeycomb, the middle steel plate baked opal paint  
**Floor Design:** Marble composite aluminum honeycomb; Door: Black titanium mirror stainless steel  
**Handrail Design:** Black titanium hair grain stainless steel + anti-fingerprint



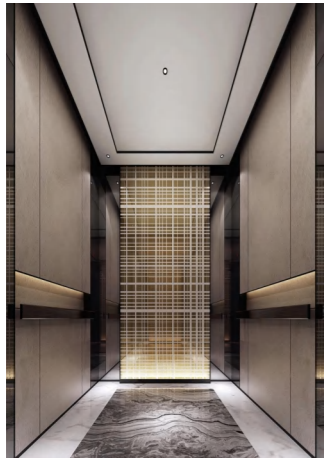
### LZ-J-154

**Cabin Top Design:** All around bronze stainless steel modeling, the middle steel plate baked white paint, acrylic transparent light  
**Cabin Rear Design:** Black titanium mirror on both sides, artistic acrylic in the middle  
**Cabin Side Design:** Steel plate coating  
**Floor Design:** Marble Mosaic  
**Handrail Design:** Bronzed stainless steel



### LZ-J-198

**Cabin Top Design:** Steel plate paint modeling  
**Cabin Rear Design:** Black titanium sandblasted stainless steel on both sides, aluminum honeycomb composite marble in the middle  
**Cabin Side Design:** Black titanium sandblasted stainless steel on both sides, aluminum honeycomb composite marble in the middle  
**Floor Design:** marble  
**Handrail Design:** Bronze stainless steel + anti-fingerprint



### LZ-J-1321

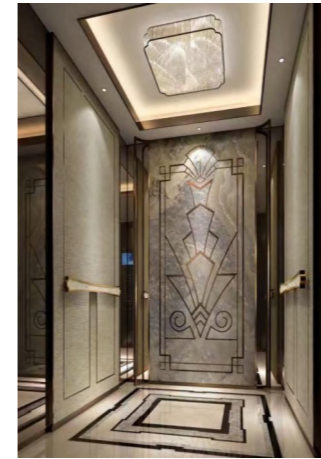
**Cabin Top Design:** Steel baking white paint, black titanium mirror stainless steel, LED downlight

**Cabin Rear Design:** Laminated process glass, black titanium mirror stainless steel, hidden light source

**Cabin Side Design:** Imported soft film, black titanium mirror stainless steel

**Floor Design:** Marble Mosaic

**Handrail Design:** Black titanium stainless steel L-shaped handrail



### LZ-J-516

**Cabin Top Design:** Steel plate baked white paint, around the bronzing edge, hidden lamp belt

**Cabin Rear Design:** Bronze mirror stainless steel on both sides, the middle marble thin copper strip

**Cabin Side Design:** Bronze mirror stainless steel on both sides, thin marble inlaid with copper bars

**Floor Design:** Thin marble parquet

**Handrail Design:** Flat handrail



### LZ-J-956

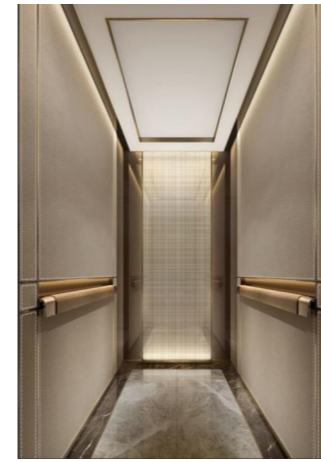
**Cabin Top Design:** Steel baking white paint, black titanium mirror stainless steel, LED downlight

**Cabin Rear Design:** Natural marble, black titanium mirror stainless steel, sandblasted stainless steel, hidden light source

**Cabin Side Design:** Leather hard case, black titanium mirror stainless steel, hidden light strip

**Floor Design:** Marble Mosaic

**Handrail Design:** N/A



### LZ-J-948

**Cabin Top Design:** Steel baking opal paint + hidden light source

**Cabin Rear Design:** Brown mirror stainless steel on both sides, art glass in the middle

**Cabin Side Design:** Brown mirror stainless steel on both sides, leather trim in the middle + hidden light strip

**Floor Design:** Natural marble puzzle

**Handrail Design:** Brown sandblasted stainless steel + leather



### LZ-J-910

**Cabin Top Design:** Steel baking white paint, LED downlight, hidden light source around

**Cabin Rear Design:** Natural marble, black titanium mirror etched stainless steel

**Cabin Side Design:** Wood veneer or imported wood grain film

**Floor Design:** Marble Mosaic

**Handrail Design:** Sandblasted stainless steel round pipe handrail



### LZ-J-13

**Cabin Top Design:** Rose gold mirror stainless steel, intermediate lamp film

**Cabin Rear Design:** Art glass on both sides, etched in rose gold in the middle

**Cabin Side Design:** Rose gold mirror stainless steel on both sides, steel plate in the middle

**Floor Design:** Marble Mosaic

**Handrail Design:** N/A



### LZ-J-983

**Cabin Top Design:** Rose gold sandblasted stainless steel

**Cabin Rear Design:** Rose gold sandblasted stainless steel on both sides, laminated aluminum honeycomb in the middle of the slab

**Cabin Side Design:** Rose gold sandblasted stainless steel + decorative strip

**Floor Design:** Natural marble puzzle

**Handrail Design:** Rose gold sandblasting + anti-fingerprint



### LZ-J-194

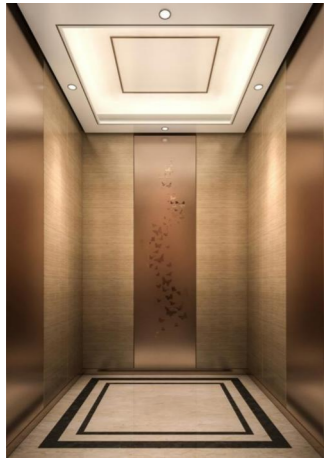
**Cabin Top Design:** Steel paint modeling, the middle decorative lines and light film

**Cabin Rear Design:** Two sides of the primary color mirror stainless steel, the middle marble modeling

**Cabin Side Design:** Stainless steel mirror on both sides, with rose gold sandblasted edge in the middle

**Floor Design:** marble

**Handrail Design:** Rose gold sandblasting + anti-fingerprint



### LZ-J-223

**Cabin Top Design:** Steel paint molding, rose gold edge, decorative strip in the middle, hidden around the lamp belt

**Cabin Rear Design:** Both sides of the steel plate map, the middle of the rose gold sandblast etching

**Cabin Side Design:** Plate mapping, rose gold sandblasting

**Floor Design:** Marble Mosaic

**Handrail Design:** N/A



### LZ-J-958

**Cabin Top Design:** Metal paint modeling, four sides of stainless steel metal line decoration, simple lights with lighting

**Cabin Rear Design:** Art glass in the middle with metal frame decoration, mirror stainless steel on both sides

**Cabin Side Design:** Fabric finish in the middle, mirror stainless steel on both sides

**Floor Design:** Marble Mosaic

**Handrail Design:** Metal armrests conceal light strips



### LZ-J-903

**Cabin Top Design:** Champagne gold mirror shape + decorative strip, hidden around the middle of the light belt

**Cabin Rear Design:** Champagne blonde stainless steel on both sides, champagne gold in the middle

**Cabin Side Design:** Champagne blonde stainless steel on both sides, champagne gold mirror in the middle

**Floor Design:** Marble Mosaic

**Handrail Design:** Champagne gold sandblasted at both ends + anti-fingerprint leather in the middle



### LZ-J-741

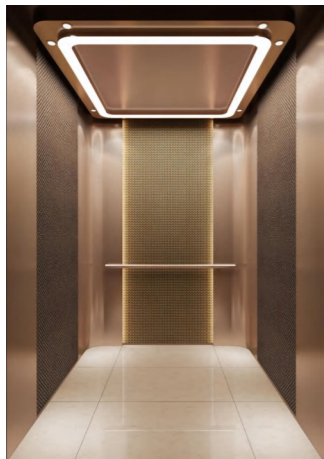
**Cabin Top Design:** Metal paint model, stainless steel metal strip decoration, hidden lights around with lighting

**Cabin Rear Design:** Brown hairline stainless steel on both sides, light plate decoration in the middle with stainless steel metal molding frame

**Cabin Side Design:** Middle leather car wire hard pack with stainless steel gold

**Floor Design:** Marble Mosaic

**Handrail Design:** Wooden handrail ends of metal Angle head



### LZ-J-376

**Cabin Top Design:** Rose gold molding, surrounded by light film;

**Front Wall:** Rose gold mirror stainless steel

**Cabin Rear Design:** Rose gold on both sides + anti-fingerprint, metal mesh in the middle

**Cabin Side Design:** Rose gold on both sides + anti-fingerprint, metal mesh in the middle

**Floor Design:** Marble Mosaic ;Cabin Door: Rose gold sandblasted stainless steel

**Handrail Design:** Rose gold sandblasting + anti-fingerprint



### LZ-J-1300

**Cabin Top Design:** Steel paint molding, decorative strip in the middle

**Cabin Rear Design:** Rose gold mirror stainless steel on both sides, steel veneer, trim strip

**Cabin Side Design:** Rose gold mirror stainless steel on both sides, middle steel plate film, decorative strip

**Floor Design:** Marble Mosaic

**Handrail Design:** N/A



### LZ-J-466

**Cabin Top Design:** Metal paint, decorative lines in the middle, hidden lamp belt with lighting

**Cabin Rear Design:** Both sides of the bronzing pattern, the middle of the cloth with decorative strips hanging pictures

**Cabin Side Design:** Bronze sandblasted stainless steel; Front Wall: Bronze sandblasted stainless steel

**Floor Design:** Marble Mosaic ; Cabin door: Rose gold sandblasted stainless steel

**Handrail Design:** Bronze sandblasted stainless steel; Cabin door: Bronze sandblasted stainless steel



### LZ-J-888

**Cabin Top Design:** Bronze sandblasted stainless steel multi-layer modeling

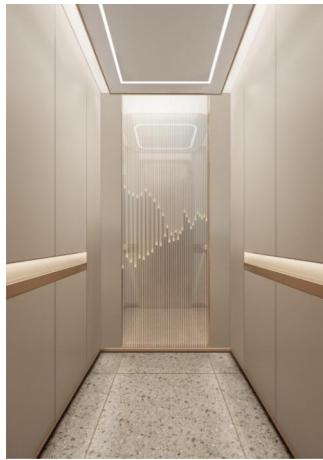
**Front Wall:** Bronze sandblasted stainless steel

**Cabin Rear Design:** Two sides of the steel plate with imported film + bronze mirror in the middle etching peony pattern stainless steel + sandblasted bronze fence three side wall decoration

**Cabin Side Design:** Both sides of the steel plate with import film + bronze mirror stainless steel in the middle

**Floor Design:** Natural marble Mosaic composite aluminum honeycomb; Cabin door: Rose gold sandblasted stainless steel

**Handrail Design:** N/A; Cabin door: Bronze sandblast etching



### LZ-J-48

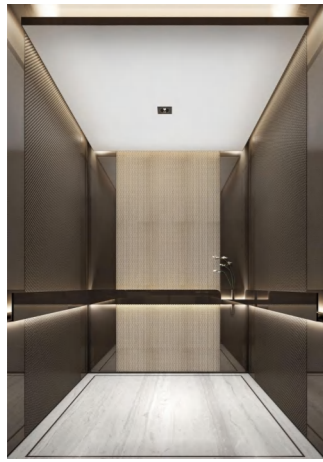
**Cabin Top Design:** Surrounded by bronze stainless steel modeling, the middle steel plate baked rice white paint, acrylic light transmittance lighting

**Cabin Rear Design:** Film on both sides, art acrylic in the middle

**Cabin Side Design:** Upper and lower film in the middle hidden light belt, bronze stainless steel frame

**Floor Design:** Terrazzo with copper strip

**Handrail Design:** Bronzed stainless steel



### LZ-J-104

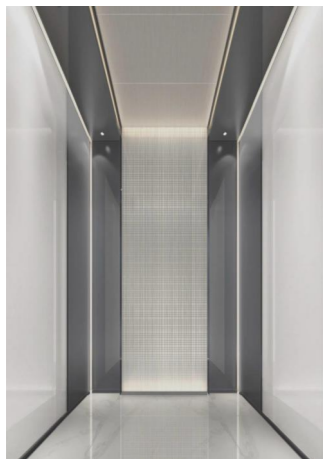
**Cabin Top Design:** Black titanium stainless steel molding around, the middle steel plate baked white paint

**Cabin Rear Design:** Black titanium mirror on both sides, metal mesh in the middle

**Cabin Side Design:** Black titanium mirror on both sides, metal mesh in the middle

**Floor Design:** Wood grain marble parquet

**Handrail Design:** Black titanium stainless steel bottom concealed light strip



### LZ-J-86

**Cabin Top Design:** Black titanium mirror stainless steel with intermediate film

**Cabin Rear Design:** Black titanium mirror stainless steel on both sides, art glass in the middle

**Cabin Side Design:** Black titanium mirror stainless steel, polished paint board

**Floor Design:** Rock slab composite aluminum honeycomb

**Handrail Design:** N/A



### MY-ZT-002

**Cabin Top Design:** Sandblasted stainless steel bronze + anti-fingerprint + light transmission film

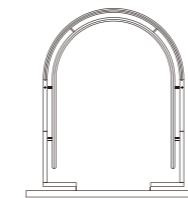
**Cabin Rear Design:** Mirror stainless steel bronze

**Cabin Side Design:** Wooden pattern decoration (PVC) + sandblasted stainless steel bronze + sandblasted stainless steel brone strip + anti-fingerprint treatment

**Floor Design:** Marble

**Handrail Design:** Round handrail in Sandblasted stainless steel bronze

## Panoramic Elevator



180°Semicircle Panoramic Elevator

### BEC01-00

**Ceiling:** C50 Hairline Stainless Steel + Acrylic Light

**COP:** COP217 Hairline Stainless Steel

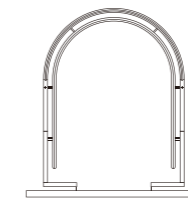
**Car Wall:** CW98-00 Hairline Stainless Steel + Laminated Safety Glass

**Car Door:** LDP200 Hairline Stainless Steel

**Floor:** F03-00 PVC

**Enclosure:** CC01-00 Gold Plated Steel plate + Acrylic

**Handrail:** H20-00 Single Tube Hairline Stainless Steel



180°Semicircle Panoramic Elevator

### BEC04-00

**Ceiling:** C52 Hairline Stainless Steel +PC Translucent Board + LED Light

**COP:** COP217 Hairline Stainless Steel

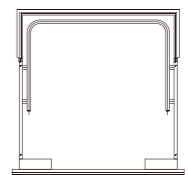
**Car Wall:** CW98-00 Hairline Stainless Steel + Laminated Safety Glass.

**Car Door:** LDP200 Hairline Stainless Steel

**Floor:** F03-00 PVC

**Enclosure:** CC02-00 Hairline Stainless Steel with Etched Strip with Black Paint

**Handrail:** H20-00 Single Tube Hairline Stainless Steel



Square Panoramic Elevator

### BEC07-00

**Ceiling:** C53 Hairline Stainless Steel + PC Translucent Board +Mirror Stainless Steel

**COP:** COP217 Hairline Stainless Steel

**Car Wall:** CW98-02 Hairline Stainless Steel + Laminated Safety Glass

**Car Door:** LDP200 Hairline Stainless Steel

**Floor:** F01-04 PVC

**Enclosure:**CC04-00 Hairline Stainless Steel

**Handrail:** H22-00 Single Tube Hairline Stainless Steel

# Decoration Configuration

## COP, Display, HOP



**COP217(Standard)**

Panel:  
Hairline Stainless Steel  
Display: White dot matrix  
Car button: B12C

**COP217**

Panel:  
Hairline Stainless Steel  
Display: White segment code LCD  
Car button: B12C

**COP217**

Faceplate:  
Hairline Stainless Steel  
Dark grey organic glass  
Display: White Color Dot Matrix LED  
Car button: B13C

**COP217**

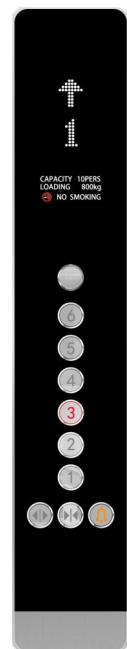
Panel:  
Hairline Stainless Steel + Acrylic Panel  
Display: Segment Display  
Car button: B12C

**COP317**

Panel:  
Hairline Stainless Steel  
Display: 7-inch LCD Display  
Car button: B12C

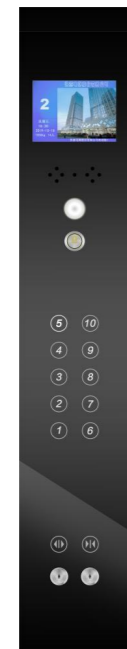
**COP327**

Panel:  
Hairline Stainless Steel  
Display: Large Segment LED Display  
Car button: B12C



**COP204**

Panel:  
Black Acrylic  
Hairline Stainless Steel  
Dot Matrix Display



**COP23-00**

Panel:  
black lacquered glass  
Display: LCD M121

## Hall Lantern



**AL05**



**AL06**



**AL07**

## COP, Display, HOP



**HOP23-00(Standard)**

Faceplate:  
Black Paint glass  
Display:  
Dot-matrix

**HOP205(Standard)**

Faceplate:  
Hairline Stainless Steel  
Dark Grey Plexiglass  
Display:  
White dot matrix  
Hall button: B12H

**HOP205**

Faceplate:  
Hairline Stainless Steel/Dark Grey Organic Glass  
Display:  
Segment Type LCD  
Hall button: B12H

**HOP205**

Faceplate:  
Hairline Stainless Steel/  
Dark Grey Organic Glass  
Display:  
Dot Matrix LED  
Hall button: B13H

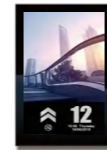
**HOP39-00**

Faceplate:  
Hairline stainless steel  
Dark grey plexiglass  
Display:  
White dot matrix  
Hall button: B12H

**HOP210**

Faceplate:  
Black Acrylic  
Hairline Stainless Steel  
Dot Matrix Display

## Multimedia Display



**LCDP070**

Display: Picture machine LCD  
Size: 7 Inches(154\*86mm)



**LCD M084**

Display: Picture machine LCD  
Size: 8.4 Inches(172X129mm)



**LCD M104**

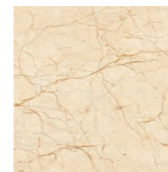
Display: Picture machine LCD  
Size: 10.4 Inches(214X161mm)



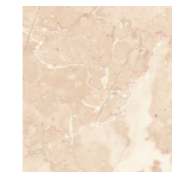
**LCD M121**

Display: Picture machine LCD  
Size: 12.1 Inches(305X254mm)

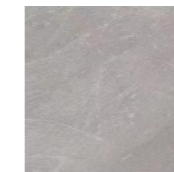
## Floor



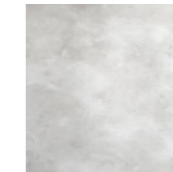
**F01-00**



**F01-01**



**F102**



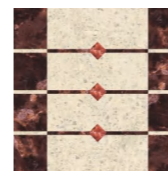
**F01-02**



**F01-14**



**F01-08**



**F01-07**



**F01-05**



**F01-06**



**F01-04**



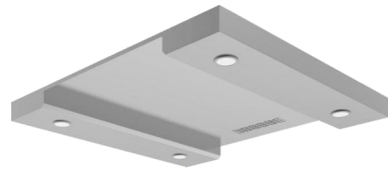
**F02-03**



**F02-04**

## Ceiling

The Required Overhead Should be  $\geq 3700\text{mm}$  when any of below ceiling model is selected



**C22**  
Hairline Stainless Steel / LED Ceiling light  
Note: C22 ceiling is not suitable for deep car



**C17**  
Hairline Stainless Steel/LED Light /Acrylic



**C08**  
Hairline Stainless Steel/ LED Light / Acrylic Tubes



**C99-09**  
Hairline Stainless Steel / LED Light/  
Etched Mirror Stainless Steel



**C21**  
Hairline Stianless Steel / LED Light/  
Acrylic  
Note: C21 ceiling is not suitable for deep car



**C16**  
Hairline Stainless Steel/ LED Light/  
Acrylic



**C19**  
Hairline Stainless Steel / LED Ceiling Light  
Note: the Emergency Exit is available for C19



**C29**  
Hairline Stainless Steel / LED Ceiling Light



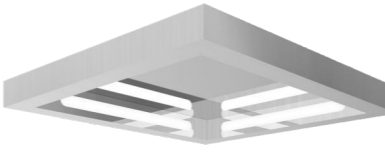
**C28**  
Hairline Stainless Steel / LED Ceiling Light



**C50**  
Hairline stainless steel/  
Acrylic lighting decoration



**C52**  
Hairline stainless steel/ PC translucent panel/  
LED ceiling light



**C53**  
Hairline stainless steel/PC translucent panel/  
Mirror stainless steel

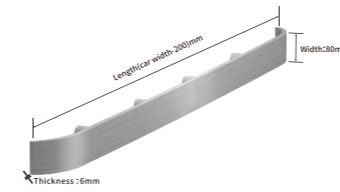


**C206**  
Hairline Stainless Steel +  
Acrylic Silk-screen Printing/  
LED Ceiling Light

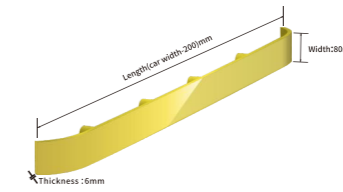


**C209**  
Hairline stainless steel/  
LED Ceiling Light

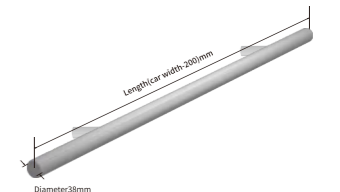
## Handrail



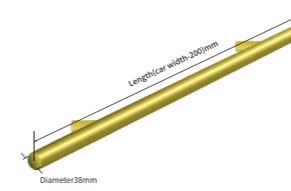
**H01-00** (Flat Type ) Hairline stainless steel  
**H01-01** (Flat Type ) Mirror stainless steel



**H01-02** (Flat Type )  
Titanium mirror stainless steel



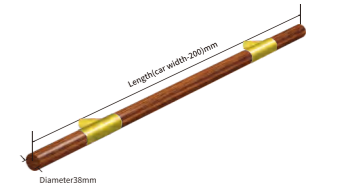
**H05-00** (Round Type) Hairline stainless steel  
**H05-01** (Round Type) Mirror stainless steel



**H05-02** (Round Type)  
Titanium Gold Mirror Stainless Steel



**H06-00**(Wooden Round Type)  
Black Walnut Wood +  
Mirror Stainless Steel Brackets



**H06-01**(Wooden Round Type)  
Black Walnut Wood +  
Titanium Gold Mirror Stainless steel Bracets

## Door Panel



**Landing Door**  
LDP400 (Optional)  
Etched Mirror Stainless Steel  
Etched pattern:EP004  
**Jamb**  
LDJ120 (Standard) Hairline  
stainless steel



**Landing Door**  
LDP400 (Optional)  
Etched Mirror Stainless Steel  
Etched pattern:EP006  
**Jamb**  
LDJ120 (Standard)  
Hairline stainless steel



**Hall Door**  
LDP200 Hairline Stainless Steel  
**Narrow Door Jamb**  
LDJ120 Hairline Stainless Steel  
**Sill**  
Extruded Aluminum



**Hall Door**  
LDP400 Etched Mirror Stainless Steel  
Etched pattern:EP007  
**Straight WideDoor Jamb**  
LDJ220 Mirror Stainless Steel  
**Sill**  
Extruded Aluminum



**Hall Door**  
LDP400 Etched Mirror Stainless Steel  
Etched pattern:EP001  
**Slope Wide Door Jamb**  
LDJ320 Mirror Stainless Steel  
**Sill**  
Extruded Aluminum



**Hall Door**  
LDP200 Hairline Stainless Steel  
**Slope Wide Door Jamb**  
LDJ320 Hairline Stainless Steel  
**Sill**  
Extruded Aluminum

# Freight Elevator



## CAR180(Standard)

**COP:** Hairline stainless steel

**Lighting:** LED

**Car Wall:** Matt grey painted steel

**Car Door:** Matt grey painted steel(side opening)

Matt grey painted steel(4 panels central opening)

**Floor:** F300 Chequered Steel Plate



## CAR280(Optional)

**COP:** Hairline stainless steel

**Lighting:** LED

**Car Wall:** Hairline stainless steel

**Car Door:** Hairline stainless steel(side opening)

Hairline stainless steel(4 panels central opening)

**Floor:** F300 Chequered steel panel

Hairline stainless steel plate is durable

Segment display is clearer,more humanized operation



## HOP 208(Standard)

Plate: Frosted stainless steel

Display: White segment

Button: BH137

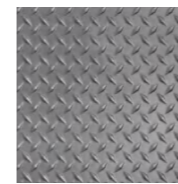
## COP 206(Standard)

Plate: Hairline stainless steel

Display: White segment

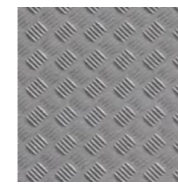
Button: BC117

## Floor



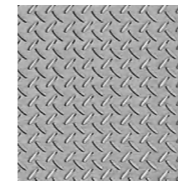
## F300(Standard)

Chequered Steel Panel



## F400(Optional)

Chequered Aluminum Panel



## F500(Optional)

Chequered Steel Panel

## Ceiling



## Standard

**Door Jamb:** LDJ110 PANTONE5295U Matt grey painted steel

**Landing Door:**

LDP110 PANTONE5295U Matt grey painted steel(side opening)

LDP120 PANTONE5295U Matt grey painted steel(4 panels central opening)

**Door Sill:** Formed steel



## Optional

**Door Jamb:** LDJ120 Hairline stainless steel

**Landing Door:**

LDP310 Hairline stainless steel(side opening)

LDP320 Hairline stainless steel(4 panels central opening)

**Door Sill:** Formed steel